

# Runnymede Borough

## Installation Update

February 2023



Southampton to London  
Pipeline Project

For more information please visit  
[www.slpproject.co.uk](http://www.slpproject.co.uk)

Dear residents,

**Thank you for your patience so far**

My name is Tim Sunderland, and I am the Project Executive for the Southampton to London Pipeline Project. You may not have heard from me personally before, but I have been working on the project since it started in 2017.

I wanted to say thank you to all residents within the Runnymede Borough for their patience whilst we install the replacement pipeline. We understand that whilst the construction is temporary and dotted across the borough, it is still not business as usual for residents, so I appreciate your patience.

I would like to reassure you that this is a once in a lifetime replacement project and our teams are working hard to install efficiently with as little disruption as we can manage. I have asked my team to put this information pack together to give you the information you may need as we complete the installation of the replacement pipeline in Runnymede. This leaflet provides you with an update on our progress so far and provides an overview of our ongoing and future works.

Should you have any questions, please do not hesitate to contact the team to discuss this with us. We welcome any and all questions, we want you to feel fully informed.

Yours sincerely,



Tim Sunderland, Southampton to London Pipeline Project Executive



# Overview of Installation Activity in Runnymede

	Paused	Current works	Completed
Trenchless Crossing TC033 - under River Bourne			
Trenchless crossing TC029 - under Hardwick Lane			
Trenchless crossing TC030 - under A320 and M25			
Trenchless crossing TC032 - under Chertsey Road A317			
Abbey Rangers Football Club			
Hardwick Lane to Guildford Road A320			
Chobham Common to Accommodation Road			
Trenchless crossing TC028 - under Longcross Road			
Trenchless crossing TC027 - under Accommodation Road			
Trenchless crossing TC031 - under Chertsey Branch Railway Line			
Longcross Road to Hardwick Road			
Canford Drive			
Foxhills Golf Course			
Addlestone Moor and Playgolf Abbey Moor Golf Club			
Trenchless Crossing TC034 - under River Thames			
Chertsey Meads			



# Chertsey Meads SANG

We restarted our trenchless installation under the River Thames on Monday 6 February. We will be restarting the open cut installation from April.

Our works in Chertsey Meads consist of open cut installation through the SANG, and two trenchless crossings into the area.

Works have been paused due to the high water table, and additional approvals needed for the River Thames crossing.

The majority of the SANG still remains open for visitors to enjoy.

The most up-to-date information will always be on our website at [www.slpproject.co.uk/chertsey-meads-sang/](http://www.slpproject.co.uk/chertsey-meads-sang/)

## Work to date

We have undertaken pre-installation works including:

- ✓ Installation and removal of a temporary bridge over the River Bourne.
- ✓ Vegetation removal in our working areas.
- ✓ Topsoil stripping.
- ✓ Installation of temporary foundations and construction equipment.
- ✓ Installation of a temporary construction compound in the SANG.
- ✓ In July 2022 we finished our trenchless crossing installation under the River Bourne.

## Open cut installation

We started open cut installation in June 2022.

This work has been paused due to excessively high ground water levels. This means we have excessive water in the trench that we cannot remove quickly enough to continue to work safely.

Once we have established a suitable temporary work design, we will recommence this section of installation. We anticipate these works will recommence in April 2023 and take three months to complete. If conditions allow we will try to start earlier.

We will not need any additional space, or be removing any vegetation or trees in order to continue this work.

We will be keeping Mead Lane open by using an installation method called pipe push to install the replacement pipeline under the private road. This is part of the open cut works.

## Trenchless Crossing TC034 - River Thames

We started our trenchless crossing installation under the River Thames in July 2022. The first stage of this work involved installing casings to create a supported bore through the sand and layers of the ground, before entering the clay layer.

However, the clay layer under the River Thames has proven to be much deeper than anticipated from our pre-installation ground investigations (boreholes).

We have an environmental commitment to drill into the clay layer below the sand and gravel layers for installation under the river. Therefore, we have needed to pause works whilst we seek additional approval from the Environment Agency to install in the clay layer below the Thames.

These works have restarted and will take around four months to complete.

## Reinstatement

Reinstatement will take place directly after the main installation works, in the next available season. All reinstatement is agreed with the landowner - Runnymede Borough Council.

- Where the topsoil has been stripped and stored, this will be reseeded after works have been completed. Or, we will allow prepare the soil for natural regeneration - in areas of grassland pasture.
- All trees will be replanted on a one for one basis.
- We will replant with native species.
- We will replant as close to their original location as possible.
- All vegetation is subject to a five-year aftercare period.

## Environmental Investment Programme (EIP)

The voluntary Environmental Investment Programme (EIP) comprises a range of activities along the proposed replacement pipeline route to carry out localised environmental improvements, such as enhancing local biodiversity within environmentally classified sites and/or areas of social/community importance.

We have agreed activities in Chertsey Meads that Runnymede Borough Council will undertake, as the landowner. The EIP activities total a £50,000 investment and include:

- Fencing and cattle grids in the west of the SANG for works detailed within the Chertsey Meads Cattle Grazing Scheme.
  - Livestock plays a key role in maintaining species rich habitats through the control of more aggressive plant species that may otherwise dominate the area. Livestock management can help prevent scrub encroachment.



# Chertsey Meads SANG

Access to Chertsey Meads and the car park serving the SANG will remain available throughout installation.

The trenchless crossing TC033 under the River Bourne has been completed.

The open cut works will recommence in April 2023 and take three months to complete. If conditions allow we will try to start early


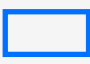


The trenchless crossing TC034 under the River Thames has restarted and take four months to complete.

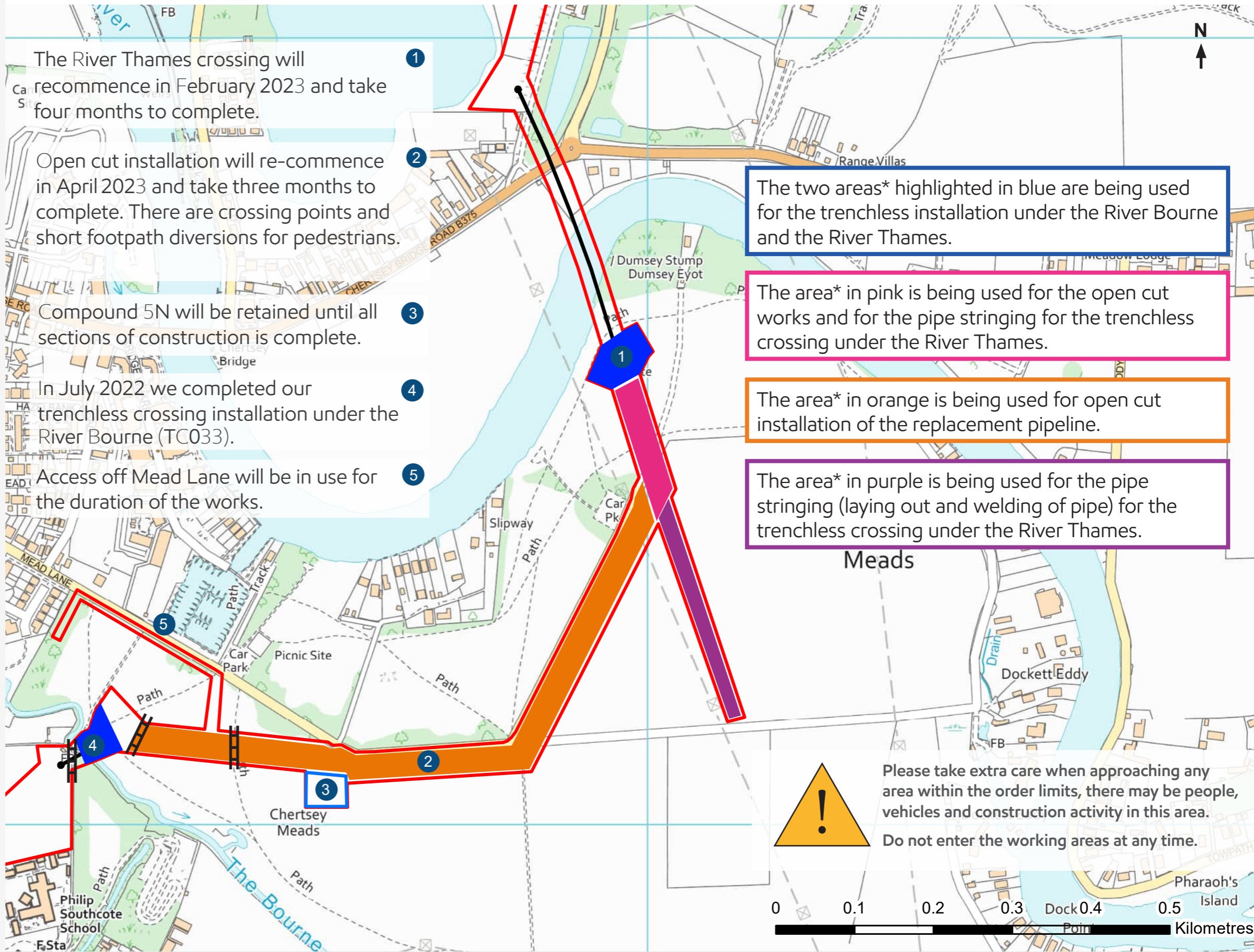
Reinstatement will takeplace in the next available season.

Once installed, the pipeline will be a quiet neighbour and will go unnoticed by most people.

View the latest information and our interactive map.



## Legend



-  Maximum limit of the working area, also known as Order Limits
-  Temporary construction compounds
-  Trenchless crossings
-  Temporary crossing points\*\*



Contains OS data © Crown Copyright and database right 2020



 @ConstructionSLP  
 @SLPConstructionProject

Have a question?  07925 068 905  
 info@slpproject.co.uk

For regular updates, sign up to our newsletter at [www.slpproject.co.uk](http://www.slpproject.co.uk)

\*area indicates the approximate area to be used but does not restrict other activities happening within the Order Limits.  
 \*\*indicative temporary crossing points will be diverted as we install across them.



# Streetworks in Runnymede

## Canford Drive

In this location we are working within the road. Following request from the Highways Authorities and Local Councils we agreed to use the established Highways Permitting Scheme to manage our installation in the roads. This means we are operating under the same requirements and approvals as any other organisation, such as other utility providers.

We began open cut installation of our replacement pipeline along Canford Drive in late October 2022.

### Installation overview

- Works started near Roakes Avenue to tie in with trenchless crossing 32 (TC032) and are progressing south in three sections of open cut works towards the cul-de-sac.
- For each section of open cut works, we are fencing off a working area of around 100m and installing noise reduction (acoustic) blankets around our works site.
- Please note that we will have welfare facilities and a low noise generator within our working area.
- Once we have installed the replacement pipeline in each section, we will backfill, resurface and then move the working area south to meet up with TC031 section at the bottom of Canford Drive.
- Once we reach this point, to manage construction impacts we will pause the open cut works before fully mobilising TC031 installation in the cul-de-sac.
- We will begin trenchless installation under the Chertsey Branch Railway Line (TC031) in January 2023. Works are estimated to take three months to complete.
- Once TC031 is complete, the open cut works in Canford Drive will restart to complete installation of the pipeline in this area.
- Once installation is completed, the road will be reinstated and reopened.



### What this means for residents

- Canford Drive will be closed in the area we are working in. This means it will not operate as a through road. As the road is a horseshoe, access to the houses where we are not working will still be available by vehicle.
- The noisiest works are likely to be breaking the 'blacktop' and installation of the sheet piles. Pedestrian access will be maintained throughout.
- You may feel vibrations when we are working near your property. We have assessed and monitored our works in roads. Any vibration is expected to be within the levels of our Noise and Vibration Management Plan.
- As we have to work directly in front of properties, our works will block driveways. Residents will receive a hand delivered postcard at least five days before the working area moves in front of any driveway.



To keep residents up to date on the progress of works, we are offering a weekly text message service. To register, text 'ROADWORKS – Canford' to 60777.



We will continue writing to all residents to keep them updated as the works progress.



We are also offering one-to-one meetings for anyone who would like to discuss their individual needs. Simply contact our engagement team via email; [info@slpproject.co.uk](mailto:info@slpproject.co.uk) or call 07925 068 905.

## Trenchless Crossing TC031

We have started installation under the Chertsey Branch Railway Line in January 2023 and will take around three months to complete.

Works will start from the south side of the railway within the grounds of the golf course and they will take around three months to complete.

### How we are installing

Our working area will be located in the southern bell mouth of Canford Drive. We are using microtunnel technology. This requires two shafts to be installed either side of the railway. The drill will be placed on the other side of the railway in the grounds of Playgolf Abbey Moor Golf Club.

During the works we will:

- Set up fencing to secure a safe working area. We will install acoustic blankets on the fencing to reduce noise.
- The blacktop will be broken and excavation of a shaft will start. This involves dropping concrete hoops and removing the soil underneath the bottom hoop to slowly push the shaft down. A receiving window will be cut into the concrete frame (at the bottom of the shaft).
- The receiving platform and equipment will be lowered in by crane.
- Before we commence the main drilling activity, we need to install a casing under the railway line.
  - As we are drilling under an operational railway we are required to work continuously until the casing is installed, this includes overnight working. In Canford drive this means approximately five nights of overnight working. During this time our teams will be inspecting progress, rather than undertaking installation activity on the Canford Drive side of the trenchless crossing.
- Drilling for main installation will start from the southern side of the railway. The shaft is back filled in sections, with the installation of a vertical (arising) pipe. The top concrete hoop, is broken up and removed.
- We will then reinstate the road to permanent 'blacktop'.
- Demobilisation of fencing and equipment.



### What this means for residents

- The noisiest works are likely to be breaking the 'blacktop' at the start of installation and removing the top concrete hoop at the end of installation.
- As the works are below ground level you are most likely to hear generators and water pumps which sounds like continuous low humming.
- Large vehicles will need to deliver equipment, materials pipes and take away/return excavated soil.
- After set up there will typically be two trucks a day going to/from site (until demobilisation).
- Houses closest to the drill will receive at least three days notice of the start of overnight works.
- Approximately five homes in the far end of the bell mouth will not have access to driveways throughout construction. We will notify the impacted homeowners ahead of driveways being blocked.
- You may feel vibrations when we are working near your property. We have assessed and monitored our works in roads. Any vibration is expected to be within the levels of our Noise and Vibration Management Plan. We will also install vibration monitors in this area.



# Playgolf Abbey Moor Golf Club





# Playgolf Abbey Moor Golf Club

## Installation Overview

Since the end of 2021, we have been working with specialist companies to develop detailed plans for the 97km replacement pipeline and associated 24-month construction programme.

Alongside the Playgolf team, we have been working to create a construction methodology to reduce and mitigate the impacts of our construction activity.

Works in the golf course will be completed in two stages:

- Open cut installation in selected areas in the course.
- Trenchless crossing installation (TC031) out of the golf course and under the railway to Canford Drive.

We are undertaking the works in the winter months to reduce the impact of users of the course as much as we can. Access to the golf course will be available throughout installation although some holes may be temporarily suspended.

## Work to date

- ✓ From September 2022 through to the end of the year we undertook pre-installation activities to prepare for open cut installation through the main section of the golf course, including vegetation clearance, fencing the working area and stripping the topsoil within the Order Limits.
- ✓ In September 2022 we installed our temporary construction compound (Compound 5M) in Addlestone Moor, to the south of Hanworth Lane. This compound is servicing both the open cut and TC031 installation works.
- ✓ In December 2022 we installed a construction works access point off Hanworth Lane. We also laid stone on the smaller track off Green Lane for access for smaller construction vehicles. This should not impact members.

## Open cut installation

Open cut installation through the golf course has started. These works are estimated to take around five months to complete.

Our open cut section working area will run adjacent to hole six which will reduce the hole from a par 4 to a par 3. This will be clearly signposted for members and users.

## Trenchless Crossing TC031

At the same time as the open cut works through the golf course we will be undertaking the trenchless installation under Chertsey Branch Railway Line (TC031). These works are due to take three months to complete.

The working area will be securely fenced with the drilling rig, construction equipment, and larger vehicles accessing the working area via the construction access off Hanworth Lane and through the Order Limits on the golf course.

For this method of installation we will be installing a below-ground level frame where the trenchless crossing installation works will be confined to. Our TC031 working area will reduce the length of hole seven from a par 4 to a par 3. A temporary tee box will be created on the side opposite to hole seven's ditch closer to the flag. This will be clearly signposted for members and users.

## Reinstatement

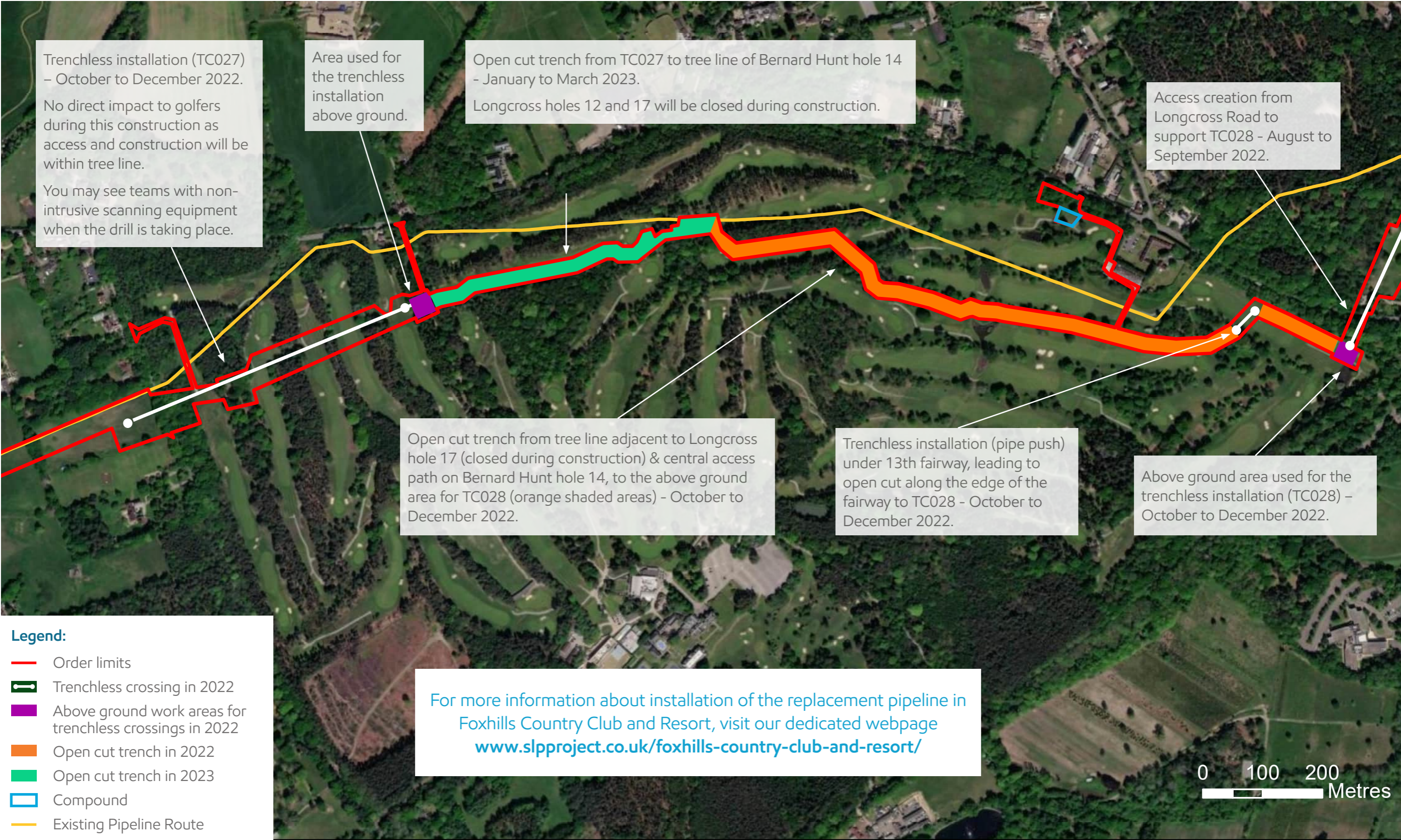
We will be fully reinstating the areas that we use, making sure that they are safe and appropriate for use by members and guests after and during installation.

Reinstatement will be completed after installation in 2023 in the next available season. The details of reinstatement will be agreed with the golf course directly.





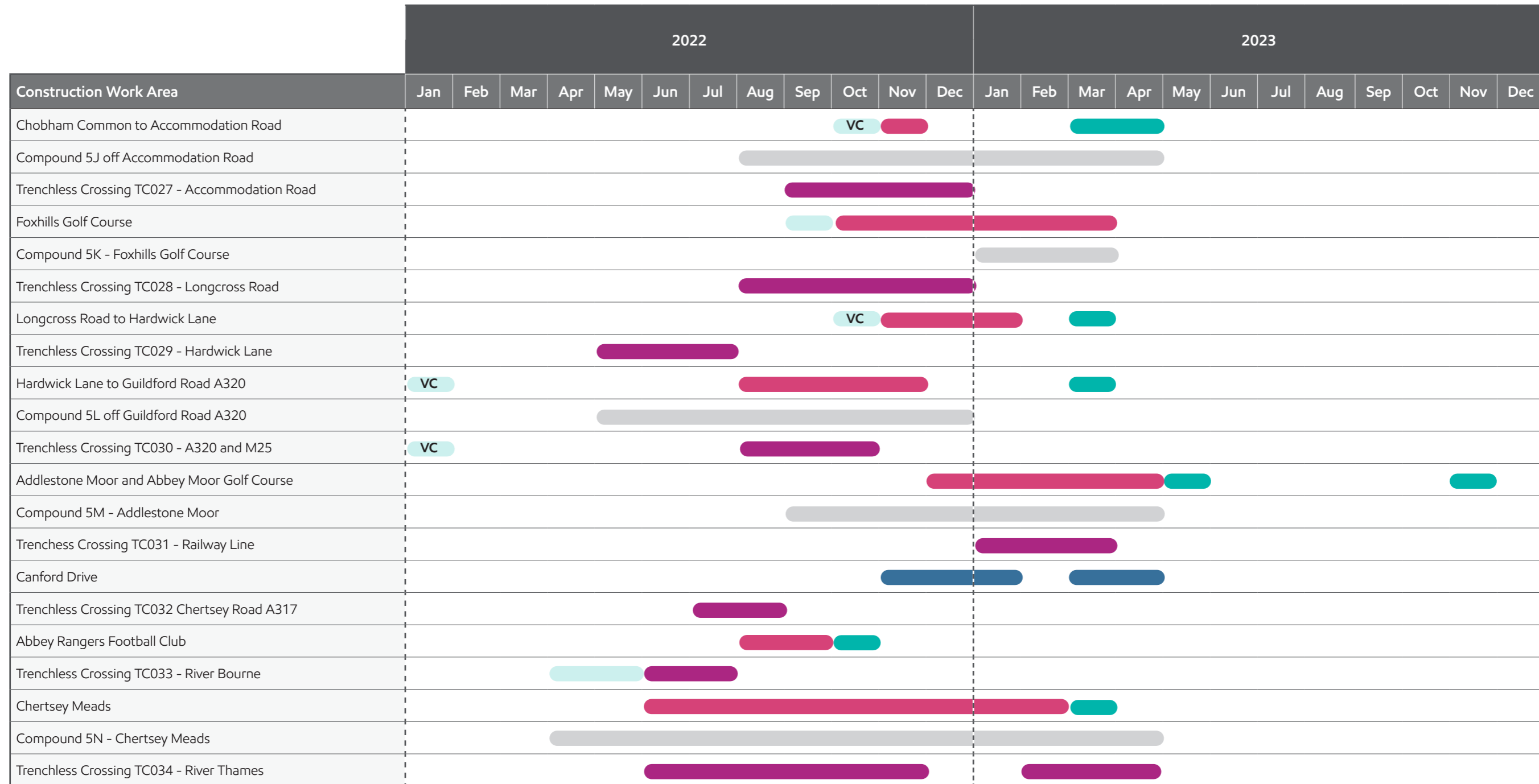
# Foxhills Country Club Golf Club and Resort







# Phasing of works – Runnymede



- Key**
- Advanced works / ecology mitigation
  - ST Strimming
  - VC Tree and Hedge Clearance
  - Trenchless crossing including work area and access
  - Open cut works rural / semi rural
  - Open cut streetworks
  - Compound in use
  - Reinstatement

i
 We are now releasing a local, area specific timeline for installation. This gives an indication of when we expect to be working in each area. We'll let you know at least two months in advance of any work starting and provide further detail of expected duration. Since we are currently progressing detailed design, the timetable may be subject to some additional change as we finalise our plans and work to reduce overall disruption during construction. Please be assured that if our plans change, we'll keep you informed. Once the pipeline is buried, it will be a quiet neighbour.

# Construction charter



## Plenty of notice

We'll let you know at least two months in advance of any work starting and if our plans change, we'll let you know.



## Here to help

Our local team will be available by phone or email to answer any questions you have.



## Information directly to you

Our local area e-newsletter and alerts will let you know what's happening. Where we are working in streets or roads, we'll operate a dedicated text service to inform interested residents.



## In your area

We'll make sure information about installation in your area is easy to find on our website, in a way that is easy for you to identify what's important to you. In some public parks, we'll hold pop up events to meet with those using the facilities and give out information about our installation plans.



## Talking to landowners

All landowners affected by the installation will have a dedicated member of our lands team to contact to discuss our work.



## Open and honest

We'll be clear about our works and any disruption that may take place.



## Safe and secure

We'll keep our team safe, and we'll keep you safe. Our commitment to health and safety is at the heart of our business and we'll make sure your safety is not impacted by our work.



## Well managed sites

Our sites will use fencing suitable to the location and we'll use things like wheel washing on our vehicles to keep the surrounding roads clean.





If you have any additional questions email us at  
**info@slpproject.co.uk**, visit our website at:

**www.slpproject.co.uk**

or scan the QR code below:



### Contact us



info@slpproject.co.uk



07925 068 905

**www.slpproject.co.uk**

You can follow us on social media to stay up-to-date with the project.

Follow us on:



@ConstructionSLP



@SLPConstructionProject



Southampton to London  
Pipeline Project

For more information please visit  
**www.slpproject.co.uk**