

# Surrey Heath Borough Installation update

January 2023



Southampton to London  
Pipeline Project

For more information please visit  
[www.slpproject.co.uk](http://www.slpproject.co.uk)

Dear residents,

**Thank you for your patience so far**

My name is Tim Sunderland, and I am the Project Executive for the Southampton to London Pipeline Project. You may not have heard from me personally before, but I have been working on the project since it started in 2017.

I wanted to say **thank you** to all residents within the Surrey Heath Borough for their patience whilst we install the replacement pipeline. We understand that whilst the construction is temporary and dotted across the borough, it is still not business as usual for residents, so I appreciate your patience.

I would like to reassure you that this is a once in a lifetime replacement project and our teams are working hard to install efficiently with as little disruption as we can manage. I have asked my team to put this information pack together to give you the information you may need as we complete the installation of the replacement pipeline in Surrey Heath. This leaflet provides you with an update on our progress so far and provides an overview of our ongoing and future works. Should you have any questions, please do not hesitate to contact the team to discuss this with us.

We welcome any and all questions, we want you to feel fully informed.

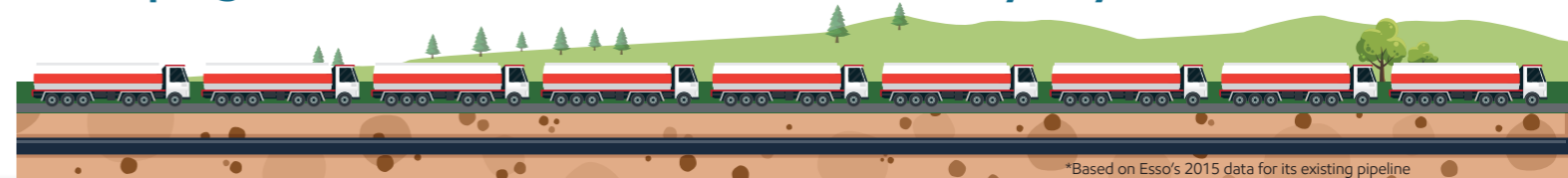
Yours sincerely,



Tim Sunderland, Southampton to London Pipeline Project Executive



**Keeping 100 road tankers off the road every day\***



\*Based on Esso's 2015 data for its existing pipeline





# Overview of Installation Activity in Surrey Heath

	Upcoming works	Current installation	Completed	Environmental Investment Programme
Trenchless Crossing 020 – Trenchless crossing installation under Blackwater Valley *				
Balmoral Drive **				
St Catherines Road **				
St Catherines SANG **				
Frith Hill **				
Pine Ridge Golf Course				
Colony Bog & Bagshot Heath **				
Red Road				
Turf Hill * **				
Windlemere SANG * **				
Blackstroud Lane East to Halebourne Lane *				
Trenchless Crossing 022 – Trenchless crossing installation under Halebourne Lane *				
Halebourne Lane to Windlesham Road				
Trenchless Crossing 023 – Trenchless crossing installation under Windlesham Road *				
Windlesham Road to Steep Hill				
Steep Hill to Windsor Road *				
Chobham Common – open cut * **				
Chobham Common – trenchless crossings 24, 25 and 26 * **				

\* tie-in works to be completed

\*\* See details about our Environmental Investment Program in Surrey Heath on pages 22-27



# Streetworks in Surrey Heath

## Red Road

We started works on Red Road at the end of June 2022 with an estimated completion time of nine months. So far, we have progressed from 150 metres west of Briars Avenue junction to the section of road east of Lightwater Road junction. **Works are currently on track to finish within the nine month period.**

- There is currently a single lane closure with two-way traffic lights in place just after Lightwater Road junction. We will continue to monitor the traffic in the area under the Highways Permitting Scheme.
- This year, we will continue to progress eastward towards Turf Hill.
- Once we reach the Red Road/ Turf Hill intersection, we will complete the tie-in works with the section of pipe installed in Turf Hill last year.
- After we complete the tie-in at the Turf Hill entrance, we will return to the section of pipe first installed west of the Briars Avenue junction to undergo tie-in installation into Colony Bog and Bagshot Heath:
  - We will be using a trenchless installation technique to install from the Bisley and Pirbright Ranges, under the road, and into the verge on the north side of Red Road.
  - There will be a single lane closure in the eastbound carriageway whilst we complete these works. This will take around two weeks to complete.

Once we have completed installation, we will fully reinstate Red Road on a like for like basis. Find out more about our installation through Colony Bog on page 20-21.

In this area we are funding activities as part of our Environmental Investment Programme (EIP) . Further details about this programme available on pages 22-27.

If you haven't done so already, please sign up to our weekly text service and monthly e-newsletter to stay up to date on our works in your area.

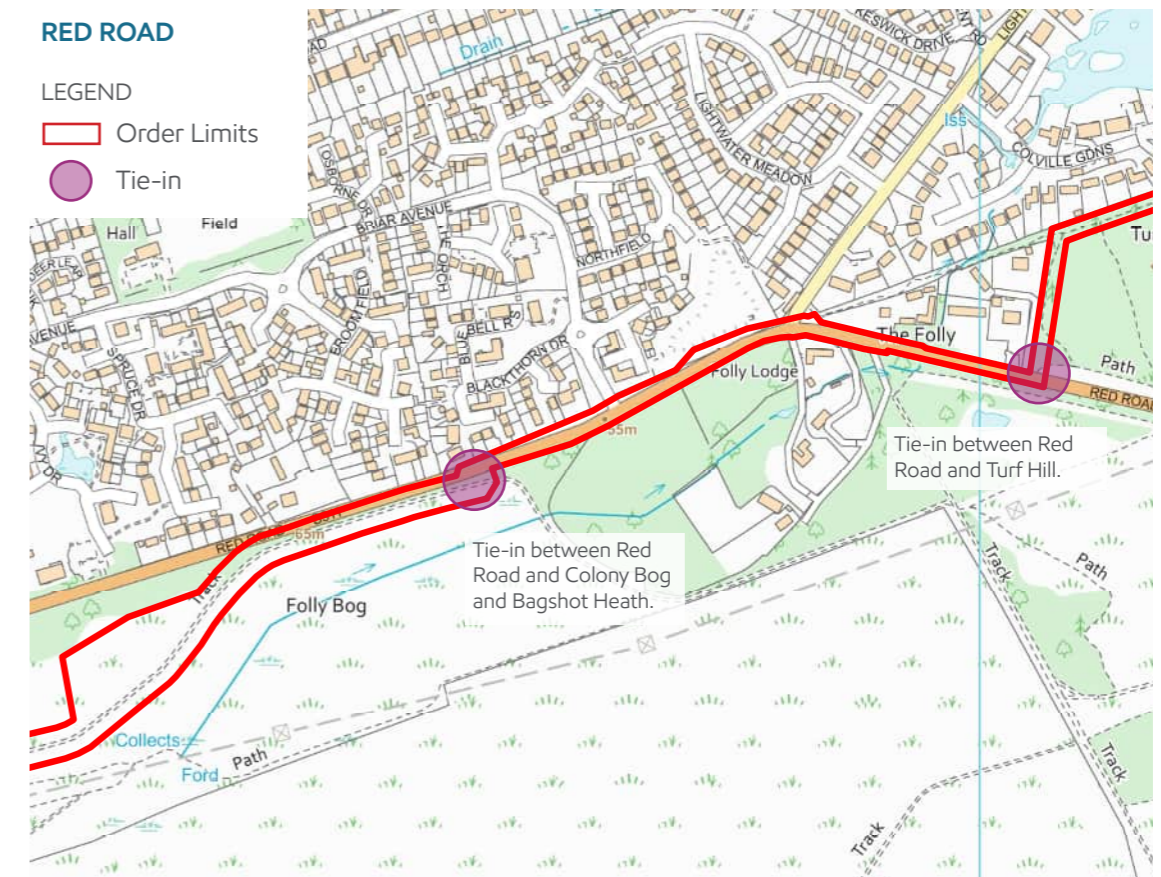


To register for our weekly text service, please text 'ROADWORKS -RED' to 60777.



To sign up to our e-newsletter, please visit [www.slpproject.co.uk/signup](http://www.slpproject.co.uk/signup).

If you would like to know more about the project, please visit [www.slpproject.co.uk](http://www.slpproject.co.uk).





## Balmoral Drive

We started installation in Balmoral Drive in May 2022 with an estimated completion time of nine months. So far, we have completed installation from the Frimley Green roundabout to the first (western) Sandringham Way roundabout.

We have encountered challenging ground conditions during installation in Balmoral Drive.

**We now estimate to complete our works in Balmoral Drive in March 2023.**

- We are currently working in the section between the two Sandringham Way roundabouts.
- We will continue to reopen completed sections of road as we move eastward to reduce impact where possible.
- We will be retaining access to Beaumaris Parade, Braemar Close, and Peshurst Rise whilst working in front of them.
- We are also working on a small section of the road at the end of Balmoral Drive (east of Peshurst Rise junction). This working area is to support the installation of the pipe from St Catherines SANG into Balmoral Drive. This section will take take approximately four to six weeks to complete.

Once we have completed installation, we will be fully reinstating the road on a like for like basis.

In this area we are funding activities as part of our Environmental Investment Programme (EIP). Further details about this programme are available on pages 22-27.

If you haven't done so already, please sign up to our weekly text service and monthly e-newsletter to stay up to date on our works in your area.



To register for our weekly text service, please text 'ROADWORKS -BAL ' to 60777.



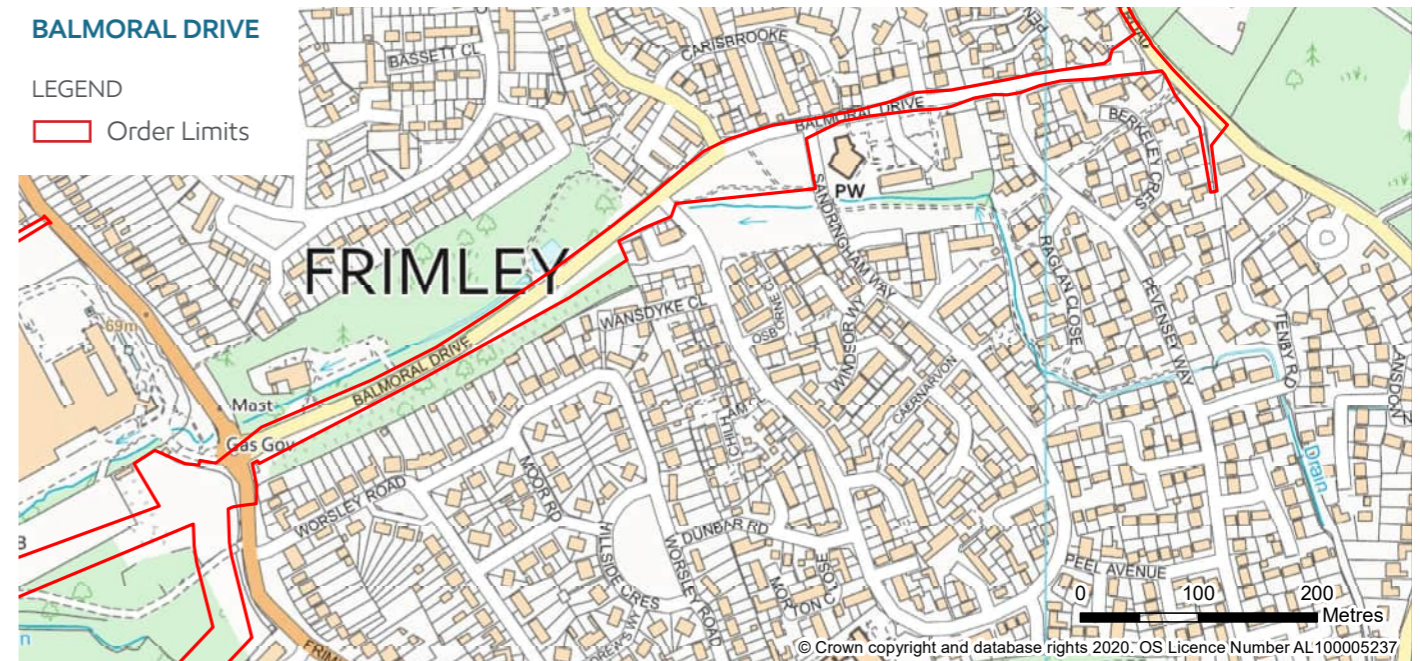
To sign up to our e-newsletter, please visit [www.slpproject.co.uk/signup](http://www.slpproject.co.uk/signup).

If you would like to know more about the project, please visit [www.slpproject.co.uk](http://www.slpproject.co.uk).

## BALMORAL DRIVE

### LEGEND

Order Limits



## Noise and vibrations

We would like to apologise for anyone who has been disrupted by the noise and vibration caused by our works. While these are typical activities taking place for works in the road, we appreciate it is not normal activity in this residential area.

We would like to reassure residents that we are undertaking spot check monitoring for noise, to confirm activities match the predicted levels. This takes place across the 97km route.

We are aware that vibrations are noticeable to nearby residents and apologise for the concern this may cause. We would like to reassure homeowners that our monitoring shows vibrations are below the guidelines for causing any property damage, as per the British Standard. We have shared a technical note with Surrey Heath Borough Council, who are the planning authority for the delivery of the Development Consent Order (DCO), to confirm our works are within the approved management document guidelines and levels.

## Why is vibration becoming noticeable?

During installation we typically use trench boxes to support the open trench. However, in this area there are voids beneath the concrete base of Balmoral Road and loose soil known as running sand. Trench boxes cannot be used in such areas as they do not have any 'anchor' into the ground – if used, they would move and sink. To provide a secure location for the pipeline and ensure that the two-metre deep trench is safe for construction staff to work in, we are using sheet piling, in which interlocking steel sheets are pushed using vibrations into the ground.

The Project is using vibrations to install sheet piles, as the alternative would be to hammer these in, which is much noisier.

Ground conditions are improving as works move west, and last week the project was able to revert to using trench boxes for the majority of the newly opened trench.



## Guildford Road

We will be using open cut installation to install across Guildford Road - connecting the pipe installed in Turf Hill to the pipe installed under Lightwater Bypass A322 (TC021).

- Installation will require a temporary road closure.
- All diversions will be fully signposted.
- We are currently seeking a Highways Permit to install across Guildford Road. Once we receive this, we will provide you with further details about the timing and nature of the works and the closure.

In this area we are funding activities as part of our Environmental Investment Programme (EIP). Further details about this programme are available on pages 22 - 27.

## St Catherines Road

We will be starting installation along St Catherines Road in February 2023. This work is estimated to take three months to complete.

- In November 2022, we carried out tree clearance to create a route from the end of Balmoral Drive, into St Catherines Road.
- In February, we will start installation works in St Catherines Road.
- Works will progress northward along the road to join with our existing installation in St Catherines SANG.
- The footpath running alongside St Catherines Road will remain open for the duration of works.

For local residents this means:

- Before we start works, you will notice fencing being installed around the working area, and the arrival of equipment, large vehicles, materials, and mobile welfare units.
- During installation, there will be construction noise and vibrations. We will have noise mitigation, such as acoustic blankets, in place during installation works and will monitor noise and vibration levels during this work.

In this area we are funding activities as part of our Environmental Investment Programme (EIP). Further details about this programme are available on pages 22-27.

If you haven't done so already, please sign up to our weekly text service and monthly e-newsletter to stay up to date on our works in your area.

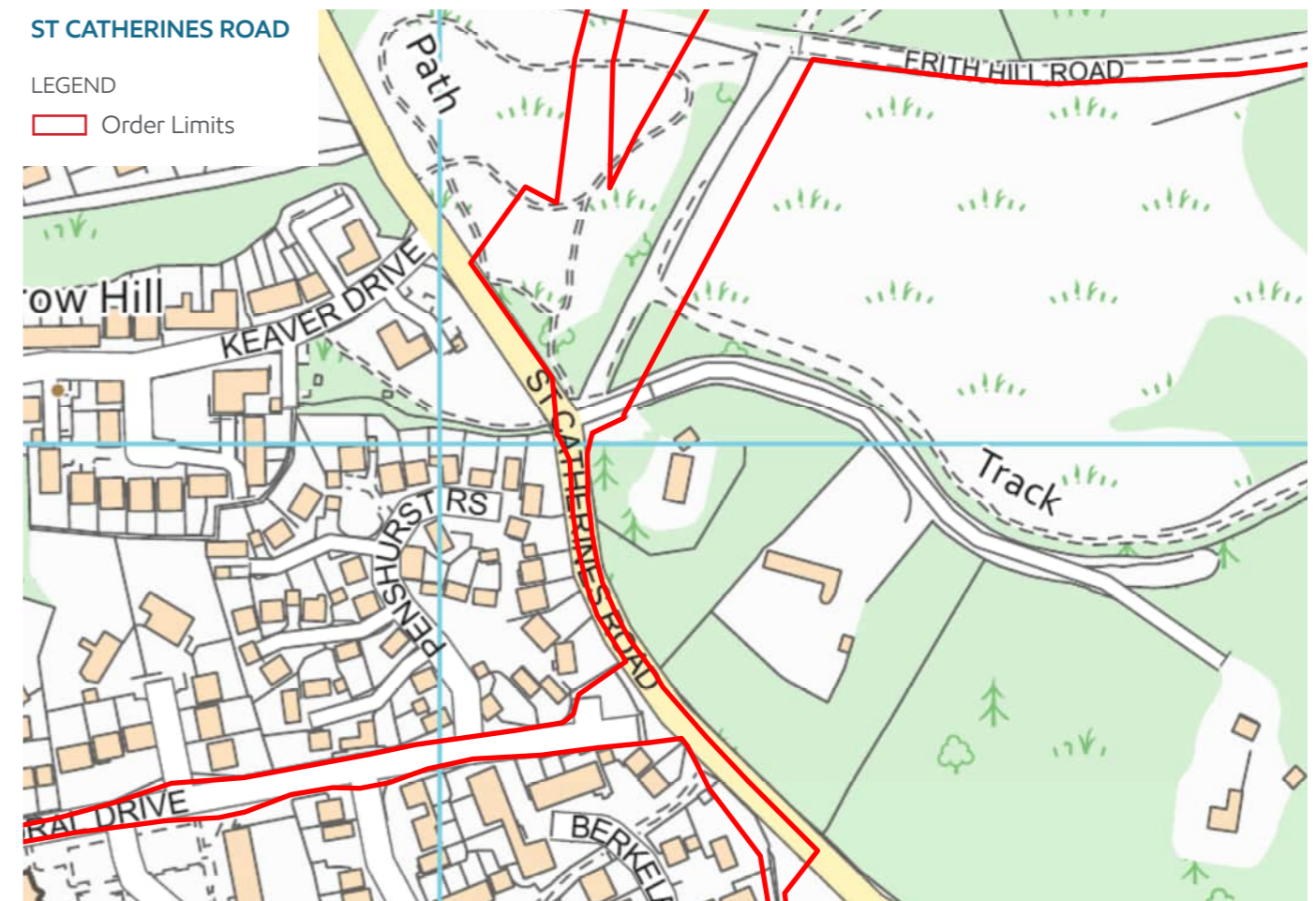


To register for our weekly text service, please text 'ROADWORKS - StCat' to 60777.



To sign up to our e-newsletter, please visit [www.slpproject.co.uk/signup](http://www.slpproject.co.uk/signup).

If you would like to know more about the project, please visit [www.slpproject.co.uk](http://www.slpproject.co.uk).



# St Catherines SANG and Frith Hill

Since September 2022 we have been undertaking vegetation and tree clearance in Frith Hill and St Catherines SANG, to prepare the working area, compound areas and access tracks.

## Frith Hill

This month, we started open cut installation in Frith Hill. This will take around four months to complete.

Open cut installation will start from the north-east end of Frith Hill, by Pine Ridge Golf Course, and move west towards St Catherines SANG.

Pedestrian access to Frith Hill will remain throughout construction. Some Public Rights of Way will be closed or diverted - see the map for further details. Please note, the parts of Frith Hill Road vehicle track that are within our working area will not be accessible to the public during installation.

## Reinstatement in Frith Hill

Reinstatement in Frith Hill is due to take place after installation is complete in spring 2023, depending on weather conditions. This land is owned by the Ministry of Defence (MOD) and legally we have to agree reinstatement with the landowner.

Following discussions with the landowner we expect to replant trees, except in the safety zone - known as the easement - where understory vegetation will be planted. We have a commitment for a one-for-one tree planting, and in this area we have agreed with the landowner to provide funds for planting the remaining trees elsewhere on their estate.

We will be scalloping the edges of the track which will increase the surface area of edge habitat to encourage a greater variety of floral species. The vegetation will be subject to a five-year aftercare period to ensure it becomes established.

## St Catherines SANG

From February, we will start open cut installation in the SANG. This will take around two months to complete.

Open cut installation will start from the junction with St Catherines Road and move towards Frith Hill.

You will still be able to use and enjoy the SANG during installation. The circular walk will have a short diversion to maintain the walking loop outside of our working area.

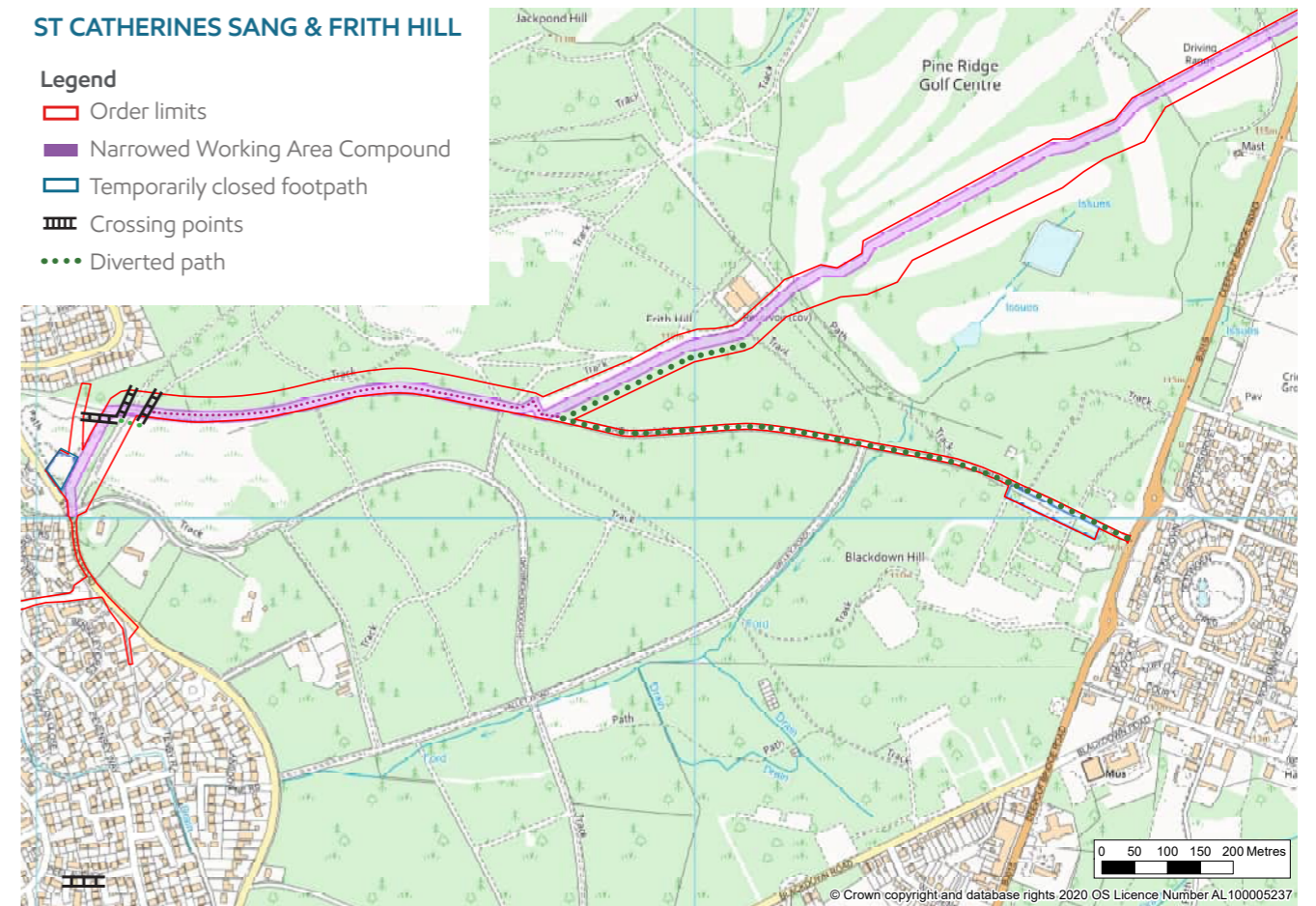
## Reinstatement in St Catherines SANG

Once installation is complete the section of the circular path inside our working area will be reinstated on a like-for-like basis.

We have an environmental commitment to replant and reseed in the suitable season. This means there will be a short gap between works finishing and replanting and reseeding starting. We expect this work to take place in autumn 2023.

All trees removed will be reinstated on a one-for-one basis and all replanted vegetation is subject to a five-year aftercare period to ensure it becomes established.

In this area we are funding activities as part of our Environmental Investment Programme (EIP). Further details about this programme are available on pages 22-27.





# Chobham Common

We completed installation of the replacement pipeline through Chobham Common at the end of 2022. We are currently completing the tie-in works.

- We completed the first section of trenchless crossing installation in winter 2021-2022.
- We then paused our works for the bird nesting season, during which time we did targeted and temporary remediation works to some of the areas which were impacted by the first phase of construction.
- We then returned in September 2022 to undergo the second phase of installation. This involves the open cut installation and the work to tie-in the separate sections of pipe.
- We completed the open cut section at the end of 2022.
- We are currently completing the tie-in works across Windsor Road.

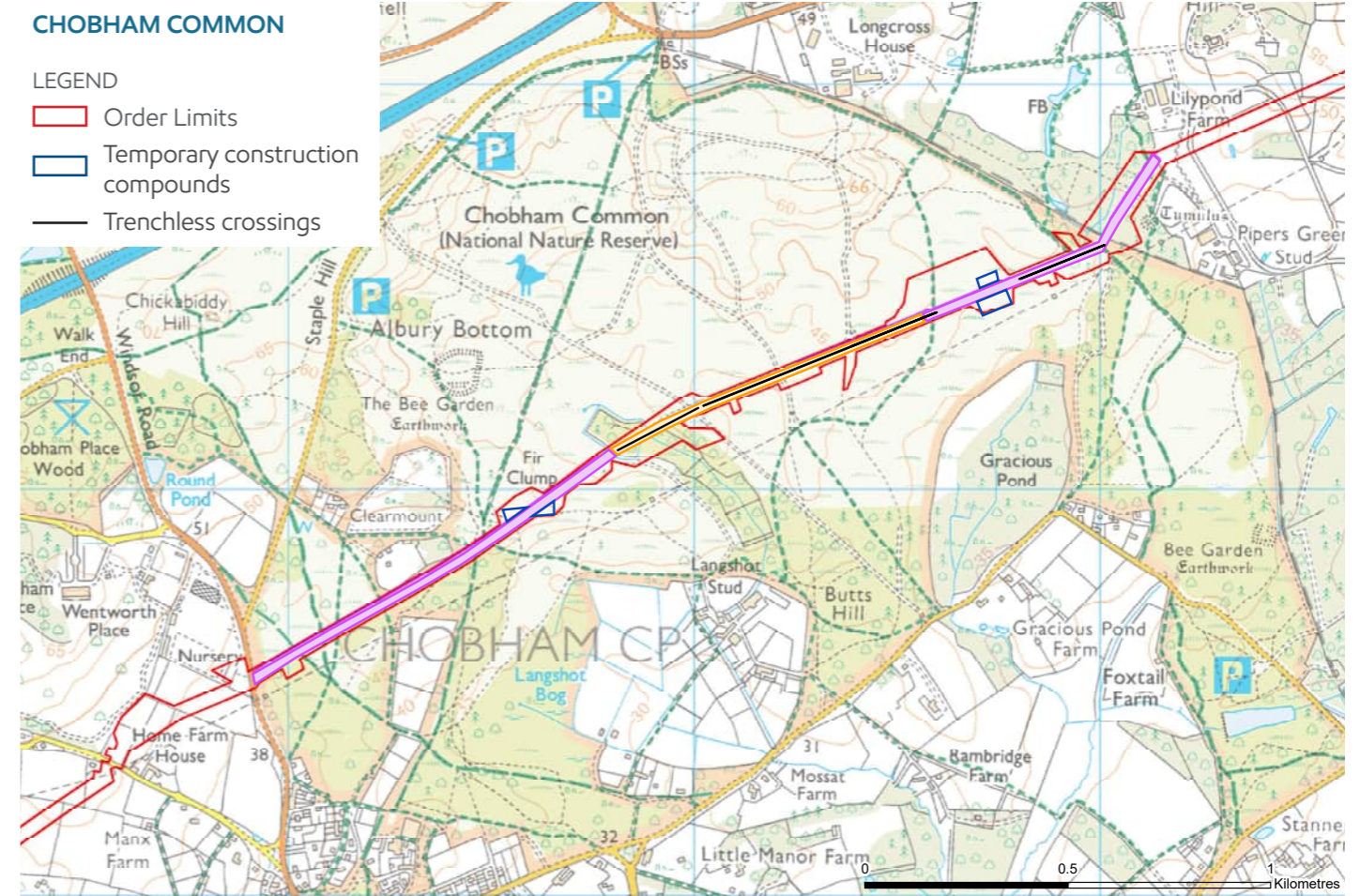
## Reinstatement in Chobham Common

For the majority of Chobham Common, the heathland habitat either side of the track will be left to naturally regenerate, as agreed with Surrey Wildlife Trust and Natural England. Natural regeneration can take a few years and requires the bare soils to be left in-situ. While visually this leaves bare earth, natural regeneration is endorsed by environmental organisations as best practice for the reinstatement of heathland, and is an environmental commitment of the project. Please avoid areas signposted as areas being left to naturally regenerate.

There are small areas, such as by Windsor Road, where there will be some replanting and reseeded. This will be done as soon as practicable this year and will be subject to a five year aftercare period. The main track was used very little during the last stage of open cut installation. We will be checking it's condition and will reinstate on a like-for-like basis as needed.

In this area we are funding and undertaking activities as part of our Environmental Investment Programme. Further details about this programme are available on pages 22-27.

Reinstatement plans are based on the Surrey Heath Landscape and Environmental Management plan, approved by Surrey Heath Borough Council, and in compliance with the Habitat Regulations Assessment (HRA) approved by Natural England.





# Windlemere SANG

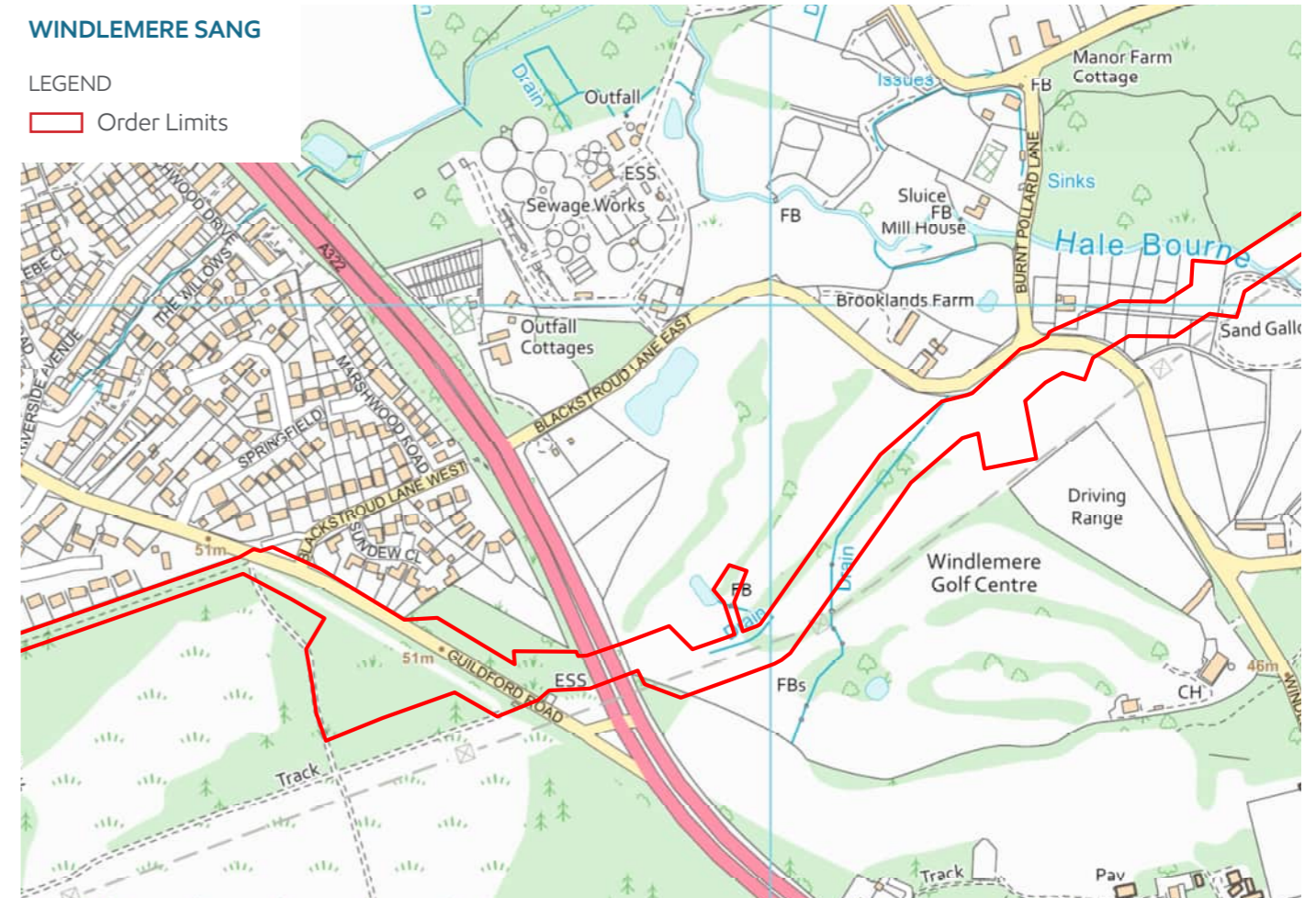
We have completed installation of the pipe in Windlemere SANG.

Generally, we will be reinstating our working areas on a like-for-like basis. The timing of our reinstatement may vary depending on weather and seasonal constraints but will be as soon as practicably feasible after the pipeline has been installed.

Reinstatement will take place in spring and autumn months. The plans and nature of reinstatement are based on agreements with Surrey Heath Borough Council:

- Reseeding will be mixed broadleaved and coniferous woodland and woodland field boundary mix for seasonally wet loamy and clayey soil.
- We will be replacing trees on a one-for-one basis using only native species.
- Where possible, replacement tree planting will be located as close as possible to the original tree.
- A five year after care period will be in place to ensure trees and vegetation establish themselves.

In this area we are funding activities as part of our Environmental Investment Programme. Further details about this programme are available on pages 22-27.



# Turf Hill

We completed the installation of the pipe through Turf Hill in October 2022. We have demobilised our equipment and reinstated the paths and car park.

## Final installation works - Tie-ins on the park boundaries.

This year, we will connect the pipe at each end of Turf Hill to the sections of pipe being installed in Red Road and Guildford Road - this is known as the tie-in works.

- The tie-in at the Red Road boundary will take place directly after the completion of the Red Road installation.
- The tie-in to the Guildford Road section will take place when we install this section. To do this we need a Highway Permit. We will share the timing of this work once the permit has been approved.

## Reinstatement in Turf Hill

### We reinstated the path and car park last year.

- Whilst we were installing the pipe in Turf Hill, we protected the existing paths with chippings and then placed bog mats over the top. This was to protect the path, avoid compaction of soils in root protection areas, and protect utilities. As a result, the paths surface was not affected by our works. The paths have now been fully reinstated.
- Our commitment to reinstatement has always been a like-for-like basis, so in the car park we have restored the existing natural surface, reinstated the wooden bollard permitter (with new posts) and the vehicle barrier is now back in operation. The car park has been fully reopened. The existing public sign was in poor condition so we have agreed with Surrey Heath Borough Council that we will fund a new sign to be installed by the Council.

Rope and post fencing was also temporarily installed along the track to keep visitors on the track, and off the freshly dug soil in areas that will be replanted.

### Tree and vegetation reinstatement

Reinstatement will take place from late January/ Early February. It will follow the reinstatement plan in the Turf Hill Site Specific Plan.

- Understory planting with native species, including over the buried pipeline.
- Native trees will be planted, the location of these were secured in the Site Specific Plan.
- The area used for our construction compound will be allowed to naturally regenerate as heathland. This has been endorsed by Natural England and is part of the Site-Specific Plan. This will involve replacing the topsoil, but not reseeding or replanting.
- The vegetation will be subject to a five-year aftercare period.

In this area we are funding activities as part of our Environmental Investment Programme (EIP) within Turf Hill. Further details about this programme are available on pages 22-27.



# Colony Bog and Bagshot Heath

## About this area

Colony Bog and Bagshot Heath is considered a Site of Special Scientific Interest (SSSI) and the area adjacent to the Maultway and Red Road are within the designated Thames Heath Special Protection Area. Our works have therefore undergone greater levels of assessment and scrutiny. This means it was subjected to both an Environmental Impact Assessment (EIA) and a Habitat Regulations Assessment (HRA) which was approved by Natural England, the national adviser on biodiversity and nature conservation.

## Vegetation Clearance

Vegetation clearance, where needed, took place in October 2021 and January 2022. To accommodate safe installation, we needed to undertake tree and vegetation removal from the working area.

This area is protected for its heathland habitat, which the project is installing around the edge of. Our HRA commitments require us to reinstate to achieve continuous areas of heathland. Where this can not be achieved, we will try to sensitively replant around the edge of this rare heathland environment.

## Construction Information

We began installation in Colony Bog and Bagshot Heath in October 2022. **We are due to complete the open cut installation towards the end of January.**

The main track and footpath located on the western side of Colony Bog will remain open. Crossing points and diversions are fully signposted.

We also completed the first tie-in section to connect the pipe in Colony Bog to the section which crosses the Maultway and Deepcut Bridge Road in October 2022.

## Connecting this section to the Red Road section:

This year, we will be undergoing the tie-in works to connect the pipe being installed in Red Road to the pipe installed in Colony Bog and Bagshot Heath:

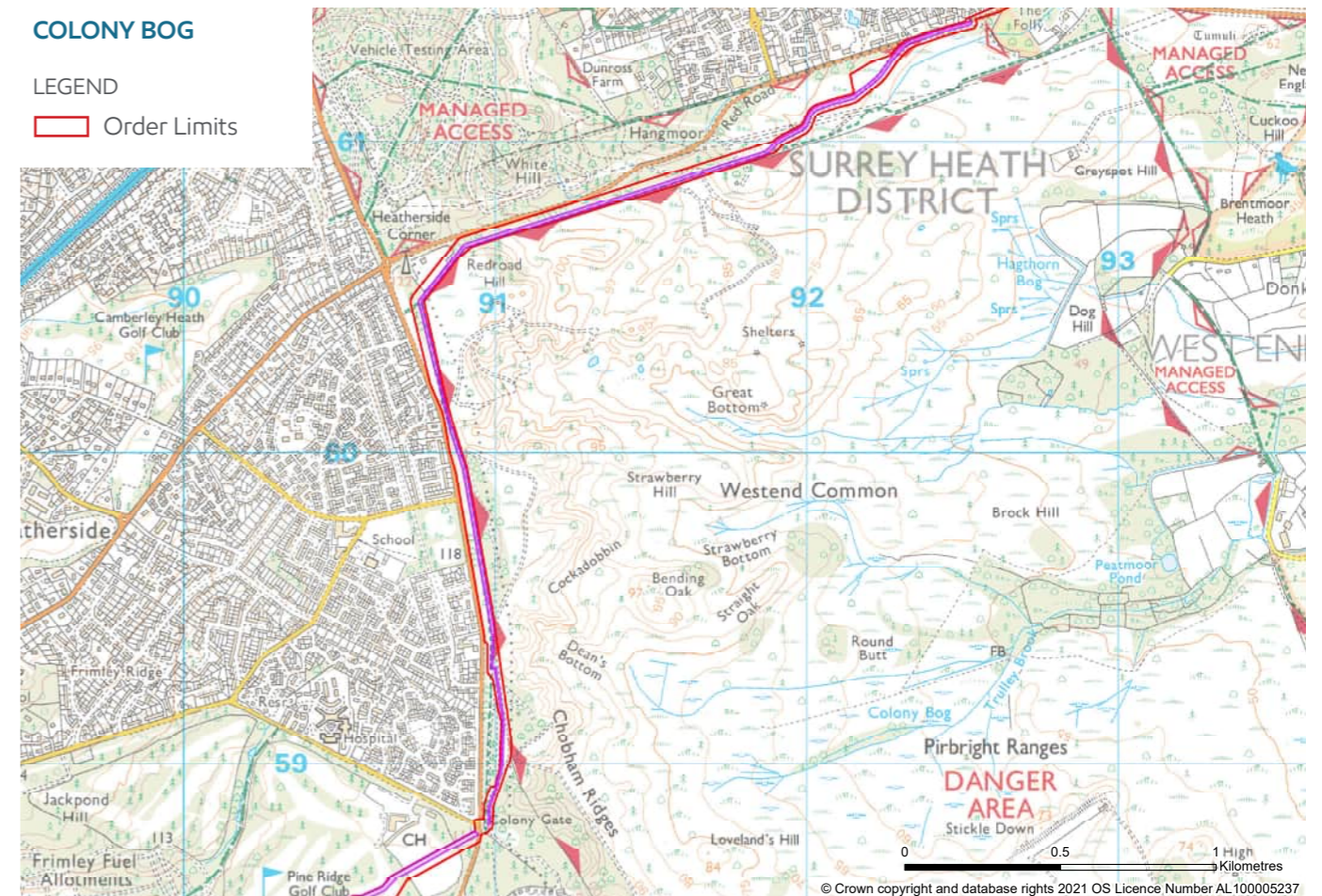
- This tie-in will take place 150 metres west of Briars Avenue junction where works started on Red Road.
- Installation will involve a pipe-ram from Colony Bog and Bagshot Heath to the northern verge on Red Road.
- The eastbound carriageway in Red Road (the lane closer to Colony Bog and Bagshot Heath) will be closed whilst we complete the pipe ram.
- This work will take about two weeks to complete.
- There will be traffic lights in place to manage traffic during installation.

## Reinstatement

Reinstatement in Colony Bog and Bagshot Heath will take place in spring and autumn months. The timing of our reinstatement may vary depending on weather and seasonal constraints but will be as soon as practicably feasible.

- We will be replacing trees that were removed during vegetation clearance on a one-for-one basis, with the plans and nature of reinstatement based on agreements with the landowners.
- The heathland areas will be allowed to naturally regenerate which is part of the HRA, approved by Natural England. This will involve replacing the topsoil, but not reseeding or replanting.

In this area we are funding activities as part of our Environmental Investment Programme (EIP) within Colony Bog and Bagshot Heath. Further details about this programme are available on pages 22-27.



# Environmental Investment Programme

We have been developing the voluntary Environmental Investment Programme (EIP) which comprises a range of activities along the proposed 97km replacement pipeline route, to carry out localised environmental improvements, such as enhancing local biodiversity within environmentally classified sites and/or areas of social/community importance.

Since 2019, we have been discussing activities with Surrey Heath Borough Council, environmental organisations and other landowners across the route since 2019 and have now finalised the full programme of activities.

Some activities are being delivered by the project. We would like to thank all landowners and organisation involved, such as the Surrey Wildlife Trust, for helping with the development of activities on their land, or land they manage.

Following discussions with Surrey Heath Borough Council, regarding activities taking place on Council owned land, we have agreed that it is best for the Council to deliver EIP activities, as they are actively managing these sites. We have now progressed the securing mechanism for this funding and can announce the EIP activities Surrey Heath Borough Council land.

We would like to give thanks to Surrey Heath Borough Council members, in particular Cllr Rebecca Jennings - Evans, portfolio holder for Leisure, Culture and Community and Council Officers, for their participation in developing the EIP activities. (These are in addition to the EIP activities already secured with other landowners, such as the Surrey Wildlife Trust).

## The EIP activities agreed with Surrey Heath Borough Council include:

### St Catherines SANG

- Enhancement of acidic grassland habitats.
- Installation of bird and bat boxes, log and brash piles.
- Loggaries, new signage and new benches.

### Herons Court Weir

- Stabilisation of the existing lake outfall structure. This reduces the flood risk to approximately 50 residential properties downstream of Herons Court Lake and retention of sufficient water levels within the lake to maintain established wildlife.

### Frimley Fuel Allotments

- This will include flow reduction works within one kilometre of the open watercourse through public access land, to allow the creation of new sections of wetland channel. Additional wetland areas will provide suitable ground conditions for reed planting to provide wildlife habitat.

### Windlemere SANG

- Installation of bat boxes, signage, and benches.
- Flow reduction within 350 metres of the open watercourse through public access land to provide a series of new pond, wetland and surface water attenuation areas.
- Installation of new recycled plastic flow controls structures and selective planting to improve water quality and reduce flood risk in the existing open watercourse channel.
- Native tree and hedgerow planting scheme.
- Planting of approximately 2500 hedging shrubs and trees and protection guards and stakes.



### Balmoral Drive

- Improvements to the balancing pond at Balmoral Drive to remove invasive planting and redress silt levels.
- Undergo new appropriate planting.

### St Catherines Road SANG

- Planting of acidic grassland plugs to support habitats throughout St Catherine's Road SANG that reflect the surrounding geology.
- Installation of bird and bat boxes, log and brash piles and loggaries over an area of 1.6 hectares.
- Contribution to new signage for the purpose of informing the public about the ecology within the Balmoral Drive Complex and St Catherine's Road SANG.
- Installation of two new benches in Balmoral Drive public open space, and one new bench in St Catherine's Road SANG.

### Turf Hill

- Targeted birch clearance within the Heathland complex, of approximately five hectares.
- New information boards within the car park to include ecological information gained from surveys.
- Installation of bird boxes, bat boxes Stag beetle stumperies, log and brash piles and Lace Wing boxes in wooded areas on the periphery of site.
- Undertaking targeted eradication of Gaultheria and Bracken. Approximately 45 hours a year for two years.

### The EIP activities agreed with other parties include:

#### Frith Hill

- Creating four grassland glades which will encourage a variety of habitats.
- Scalloping the edges of the track, which will increase the surface area of edge habitat to encourage a greater variety of floral species.

#### Chobham Common

- Targeted scrub clearance along order limits throughout Chobham Common.
- Entomology survey within order limits.
- Updating of Wildfire Management Plan to build and enhance the existing plan as well as tying in with the new site management plan.

#### Folly Bog (Brentmoor Heath)

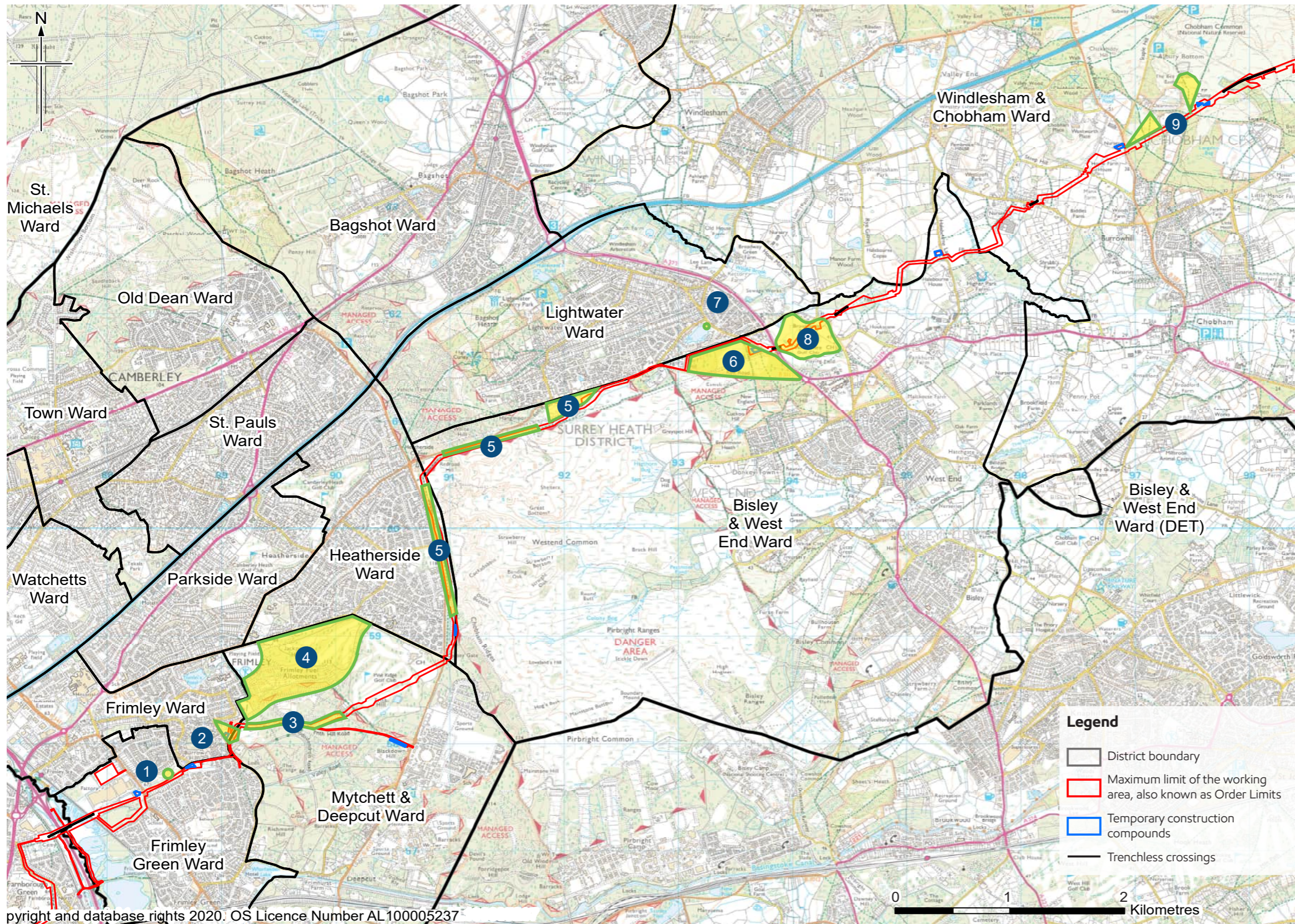
- Research to update invertebrate information for the area.

#### Colony Bog and Bagshot Heath

- Creation of bare earth scrapes. Bare earth scrapes create breeding opportunities and egg laying habitat for reptiles and invertebrates.
- Bracken removal and scrub clearance. Bracken removal and Scrub clearance creates opportunities for a greater variety of flora to grow by increasing sunlight availability to the understory. It also creates opportunities for reptiles by increasing the availability of refuge habitat alongside basking habitat.
- Creation of four glades approximately 60 metres and scalloping of the adjacent scrub. Glades encourage a variety of habitat including grassland which creates a matrix of habitats across the site. Scalloping increases surface area of edge habitat which encourages a greater variety of floral species. Scalloping creates opportunities for reptiles by increasing the availability of refuge habitat alongside basking habitat.
- Signage and interpretation boards at the location noted in the attached figure.
- New signage and interpretation boards.
- Cherry laurel and rhododendron removal. Cherry laurel and rhododendron are non-native invasive species which impact the favourable condition of the SSSI.



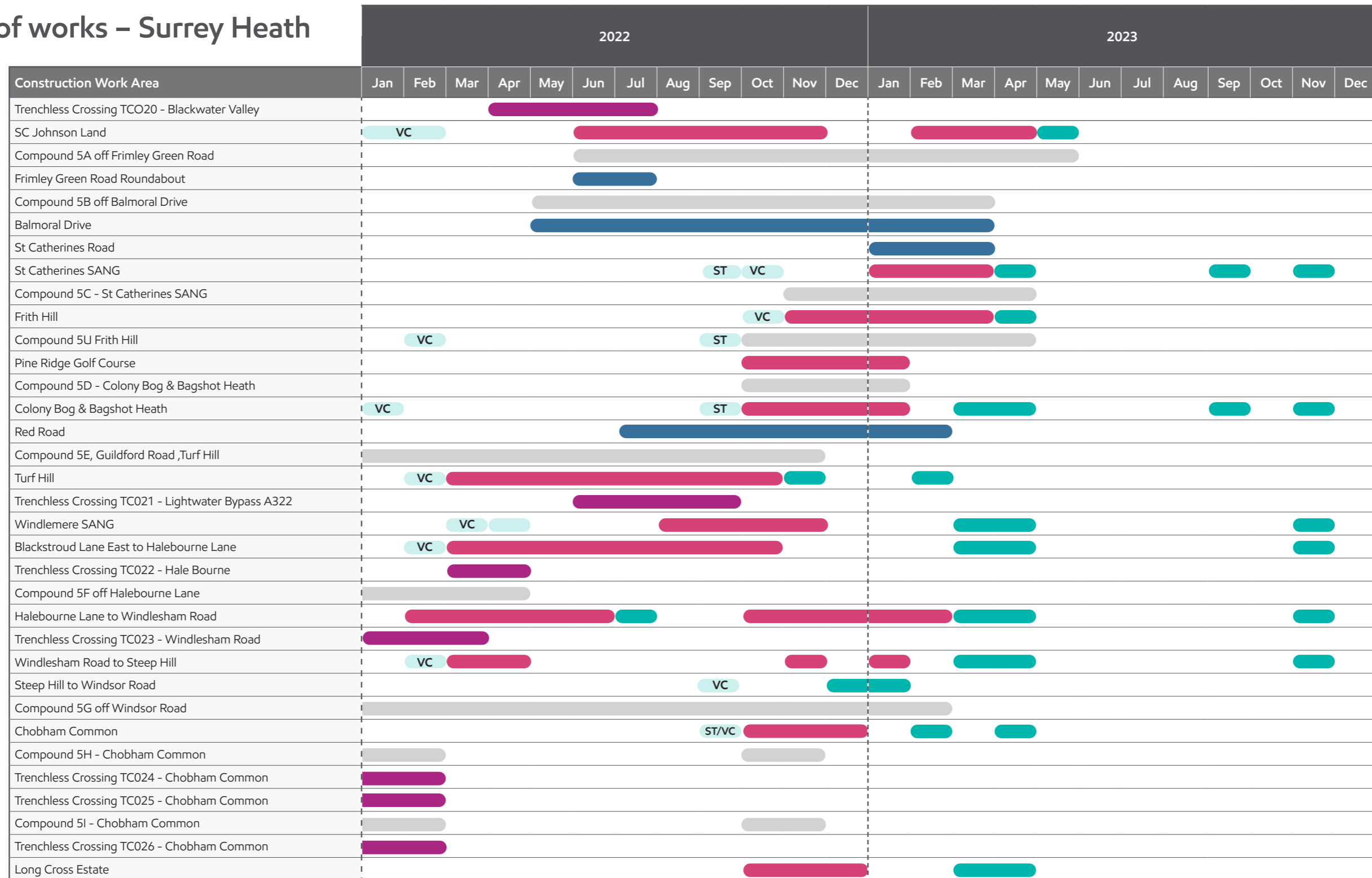
# Surrey Heath EIP



- 1 **Balmoral Drive**  
Improvements to balancing pond estimated at £12,000.
- 2 **Balmoral Drive / St Catherine's Road SANG**  
Acidic grassland habitat, installation of benches, bird and bat boxes, log and brush piles, and loggaries, signage to inform the public of ecology within the area. Esso are contributing £12,600 to SHBC to fund these activities.
- 3 **Frith Hill**  
Enhanced reinstatement and creation of four glades. Works are estimated at £5,000.
- 4 **Frimley Fuel Allotments** Watercourse flow reduction works estimated at £5,000.
- 5 **Colony Bog and Bagshot Heath**  
Bare earth scrapes, targeted scrub clearance, and glade creation. Esso contributing £15,000 to SHBC to fund works.
- 6 **Turf Hill**  
Birch clearance, installation of bird boxes, bat boxes, Stag Beetle stumperies, log and brush piles and Lace Wing boxes in wooded areas, and support for Gaultheria and Bracken management. Information boards including ecological information gained from ESSO and SHBC surveys will be installed in the car park. This is estimated at £29,000.
- 7 **Herons Court Weir**  
Improvements including reconstruction of outfall structure estimated at £10,000.
- 8 **Windlemere SANG**  
Native tree and hedgerow planting scheme, watercourse flow reduction, and installation of bat boxes, signage, and benches. Esso are contributing £11,400 to SHBC to fund these activities.
- 9 **Chobham Common**  
Scrub clearance, survey and management plan support. The value of these activities amounts to £32,500.



## Phasing of works – Surrey Heath



**Key**

- Advanced works / ecology mitigation
- ST** Strimming
- VC** Tree and Hedge Clearance
- Trenchless crossing including work area and access
- Open cut works rural / semi rural
- Open cut streetworks
- Compound in use
- Reinstatement
- SE** Seeding

*i* We are now releasing a local, area specific timeline for installation. This gives an indication of when we expect to be working in each area. We'll let you know at least two months in advance of any work starting and provide further detail of expected duration. Since we are currently progressing detailed design, the timetable may be subject to some additional change as we finalise our plans and work to reduce overall disruption during construction. Please be assured that if our plans change, we'll keep you informed. Once the pipeline is buried, it will be a quiet neighbour.

# Construction charter



## Plenty of notice

We'll let you know at least two months in advance of any work starting and if our plans change, we'll let you know.



## Here to help

Our local team will be available by phone or email to answer any questions you have.



## Information directly to you

Our local area e-newsletter and alerts will let you know what's happening. Where we are working in streets or roads, we'll operate a dedicated text service to inform interested residents.



## In your area

We'll make sure information about installation in your area is easy to find on our website, in a way that is easy for you to identify what's important to you. In some public parks, we'll hold pop up events to meet with those using the facilities and give out information about our installation plans.



## Talking to landowners

All landowners affected by the installation will have a dedicated member of our lands team to contact to discuss our work.



## Open and honest

We'll be clear about our works and any disruption that may take place.



## Safe and secure

We'll keep our team safe, and we'll keep you safe. Our commitment to health and safety is at the heart of our business and we'll make sure your safety is not impacted by our work.



## Well managed sites

Our sites will use fencing suitable to the location and we'll use things like wheel washing on our vehicles to keep the surrounding roads clean.



If you have any additional questions email us at **info@slpproject.co.uk**, visit our website at:

**www.slpproject.co.uk**

or scan the QR code below:



### Contact us



info@slpproject.co.uk



07925 068 905

**www.slpproject.co.uk**

You can follow us on social media to stay up-to-date with the project.

Follow us on:



@ConstructionSLP



@SLPConstructionProject



Southampton to London  
Pipeline Project

For more information please visit  
[www.slpproject.co.uk](http://www.slpproject.co.uk)