

St Catherines SANG and Frith Hill Construction Update

January 2023



Southampton to London
Pipeline Project

For more information please visit
www.slpproject.co.uk

About the project

The Southampton to London Pipeline (SLP) project is replacing 90km of the underground fuel pipeline between Boorley Green, Hampshire and the West London Terminal storage facility in Hounslow.

- Pipelines are a safe, secure and low impact method of transporting fuel to some of the UK's busiest airports.
- Once installed, the replacement pipeline will be buried and a quiet neighbour.
- It will continue to keep around 100 road tankers off the road every day*.

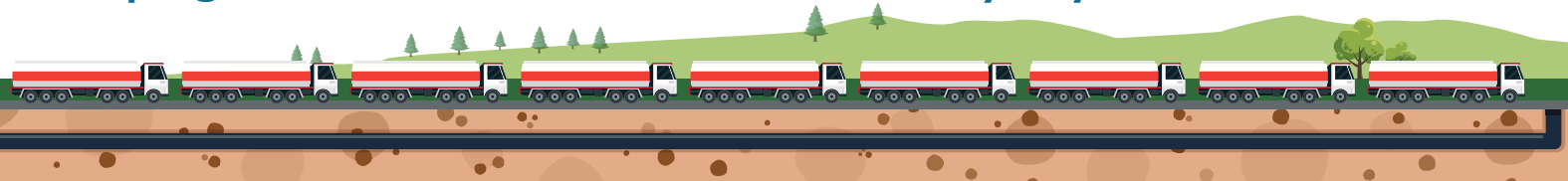
This leaflet contains an overview of the works planned in St Catherines SANG and Frith Hill, our expected timetable for works and a map of where the replacement pipeline will be installed.

We understand that no one likes the noise and inconvenience caused by construction activities, so we'd like to thank you in advance for your patience when it comes to any disruption that we may cause. It is important to us that you know when we will be working in your area and how you can contact us if you have any questions.

Route selection

The existing pipeline follows part of the vehicle track through the SANG and Frith Hill before heading north towards the golf course. The replacement pipeline route was selected as it followed a similar route and our construction works could make use of existing track to reduce impacts. We made an early commitment to reduce our working area by 50% to 15m wide, to reduce impacts on mature trees, potential bat roosts and a historic embankment.

Keeping 100 road tankers off the road every day*



Based on Esso's 2015 data for its existing pipeline

Community charter



Plenty of notice

We'll let you know at least two months in advance of any work starting and if our plans change, we'll let you know.



Here to help

Our local team will be available by phone or email to answer any questions you have.



Information directly to you

Our local area e-newsletter and alerts will let you know what's happening. Where we are working in streets or roads, we'll operate a dedicated text service to inform interested residents.



In your area

We'll make sure information about installation in your area is easy to find on our website, in a way that is easy for you to identify what's important to you. In some public parks, we'll hold pop up events to meet with those using the facilities and give out information about our installation plans.



Talking to landowners

All landowners affected by the installation will have a dedicated member of our lands team to contact to discuss our work.



Open and honest

We'll be clear about our works and any disruption that may take place.



Safe and secure

We'll keep our team safe, and we'll keep you safe. Our commitment to health and safety is at the heart of our business and we'll make sure your safety is not impacted by our work.



Well managed sites

Our sites will use fencing suitable to the location and we'll use things like wheel washing on our vehicles to keep the surrounding roads clean.



Vegetation removal works

Since September 2022 we have been undertaking vegetation and tree clearance in Frith Hill and St Catherines SANG, to prepare the working area, compound areas and access tracks.

In St Catherines SANG our works only require the removal of a small number of younger trees and shrubs within the SANG but not the mature trees on the boundary with St Catherines Road, although branch pruning may have been required to avoid vehicles striking low branches.

We have also committed to reducing the working width to a maximum of 15m wide instead of 30m, which covers the total length of the open cut work within the area.

Our construction compounds

We have built a temporary construction compound next to the southern access point in the SANG. This compound enables us to use narrow working techniques through Frith Hill and will support works in the local area.

As it is in public open space we will wrap it in acoustic blankets to reduce noise.

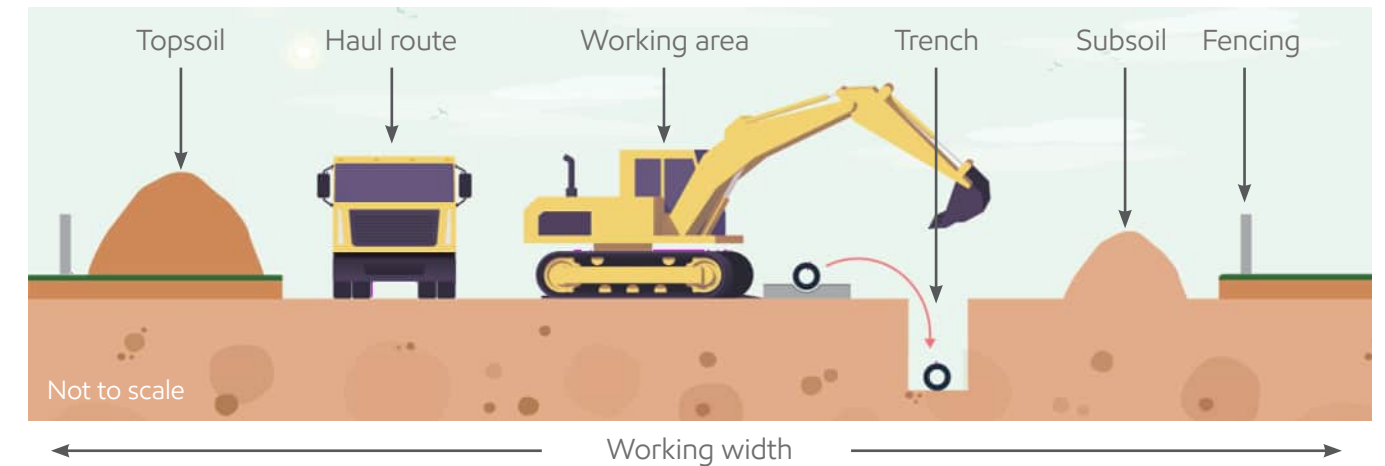
There is another temporary construction compound in Frith Hill, at the eastern end of the track where it joins Deepcut Bridge Road. This provides additional vehicle access and reduces the amount of construction traffic coming through St Catherines SANG. It has been placed in an area agreed with the landowner, the MOD.

Compounds provide safe and secure temporary storage for equipment, steel pipe, materials, and waste. These are temporary compounds and are not long-term storage facilities. The main purpose of a compound is to reduce our impact on the local area by keeping as much contained in one location as we can.

These compounds will be in place until works are completed in spring 2023.

Installation in this area

We are using open cut techniques to install in this area. You can view a video of this method on our website www.slpproject.co.uk/installation and below is an image of the typical set-up. We'll be using narrow working construction methods so the set-up will be slightly different.



What to expect during installation

- Heras-type fencing, or strong-wall fencing securing the working area.
- Equipment, vehicles and materials will be delivered to the working area.
- Construction access for our works will be through the southern access to the SANG by the car park and from the eastern end of the track by Deepcut Barracks.
- Deliveries of the steel pipe, which will be brought to site in a 'just-in-time' delivery sequencing throughout works.
- Stringing and welding of the pipe.
- The digging of the trench for the open cut section.
- Installation of the replacement pipeline.

We understand that no one likes the noise and inconvenience caused by construction activities, so we'd like to thank you in advance for your patience when it comes to any disruption that we may cause.



About installation in Frith Hill

This month, we started open cut installation in Frith Hill. This will take around four months to complete.

Open cut installation will start from the north-east end of Frith Hill, by Pine Ridge Golf Course, and move west towards St Catherines SANG.

Pedestrian access to Frith Hill will remain throughout construction. Some Public Rights of Way will be closed or diverted - see the map for further details. Please note Frith Hill Road vehicle track within our working area will not be accessible to the public during installation.

Reinstatement in Frith Hill

Reinstatement in Frith Hill is due to take place after installation is complete in spring 2023, depending on weather conditions. This land is owned by the Ministry of Defence (MOD) and legally we have to agree reinstatement with the landowner.

Following discussions with the landowner we expect to replant trees, except in the safety zone - known as the easement - where understory vegetation will be planted. We have a commitment for a one-for-one tree planting, and in this area we have agreed with the landowner to provide funds for planting the remaining trees elsewhere on their estate.

To improve this area, we will be scalloping the edges of the track which will increase the surface area of edge habitat to encourage a greater variety of floral species. The vegetation will be subject to a five-year aftercare period to ensure it becomes established.

About installation in St Catherines SANG

From February 2023 we will start open cut installation in the SANG. This will take around two months to complete.

Open cut installation will start from the junction with St Catherines Road and move towards Frith Hill.

You will still be able to use and enjoy the SANG during installation. The circular walk will have a short diversion to maintain the walking loop outside of our working area.

Reinstatement in St Catherines SANG

Once installation is complete the section of the circular path inside our working area will be reinstated on a like-for-like basis.

We have an environmental commitment to replant and reseed in the suitable season. This means there will be a short gap between works finishing, and replanting and reseeding starting. We expect this work to place in autumn 2023.

All trees removed will be reinstated on a one-for-one basis and all replanted vegetation is subject to a five-year aftercare period to ensure it becomes established.

Environmental Investment Programme (EIP)

The voluntary EIP comprises a range of activities along the proposed replacement pipeline route to carry out localised environmental improvements, such as enhancing local biodiversity within environmentally classified sites and/or areas of social/community importance.

We have been discussing activities with landowners across the route and in Surrey Heath since 2019. We will shortly be releasing the full EIP via our website.

In Frith Hill, we will be creating four grassland glades which will encourage a variety of habitats. We will also be scalloping the edges of the track which will increase the surface area of edge habitat to encourage a greater variety of floral species as part of our EIP programme.

In St Catherines SANG our programme includes enhancement of acidic grassland habitats, installation of bird and bat boxes, log and brush piles, and loggaries, new signage and new benches.



St Catherines SANG and Frith Hill

Construction Information

Both areas will remain open to the public. Some Public Rights of Way and paths will be diverted or closed. Where the vehicle track, known as Frith Hill Road, is within our working area it will be closed to the public.

We have started open cut installation in Frith Hill. This will take around four months.

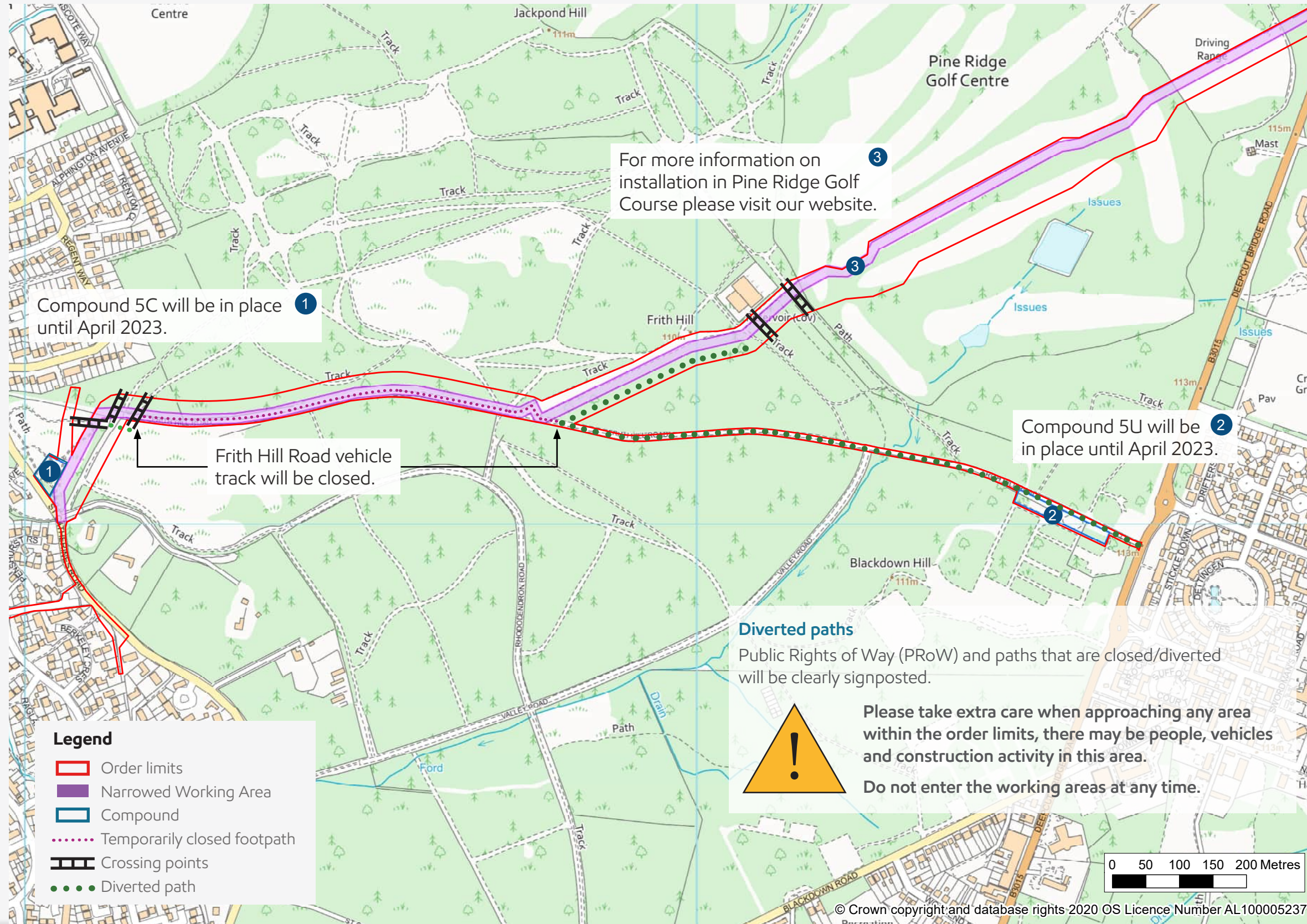
In February 2023 we will start open cut installation works in St Catherines SANG. This will take around two months.

Reinstatement will take place in the next suitable season, typically autumn or spring. Frith Hill will take place in spring 2023, depending on weather conditions, and St Catherines SANG in autumn 2023.

Sign up to our e-newsletter, via our website to receive regular updates or visit the SANG and Frith Hill webpage.



Scan the QR code to visit our interactive map for all information about our installation work.



Get the latest construction updates online

www.slpproject.co.uk



@ConstructionSLP



@SLPConstructionProject

Have a question?



07925 068 905



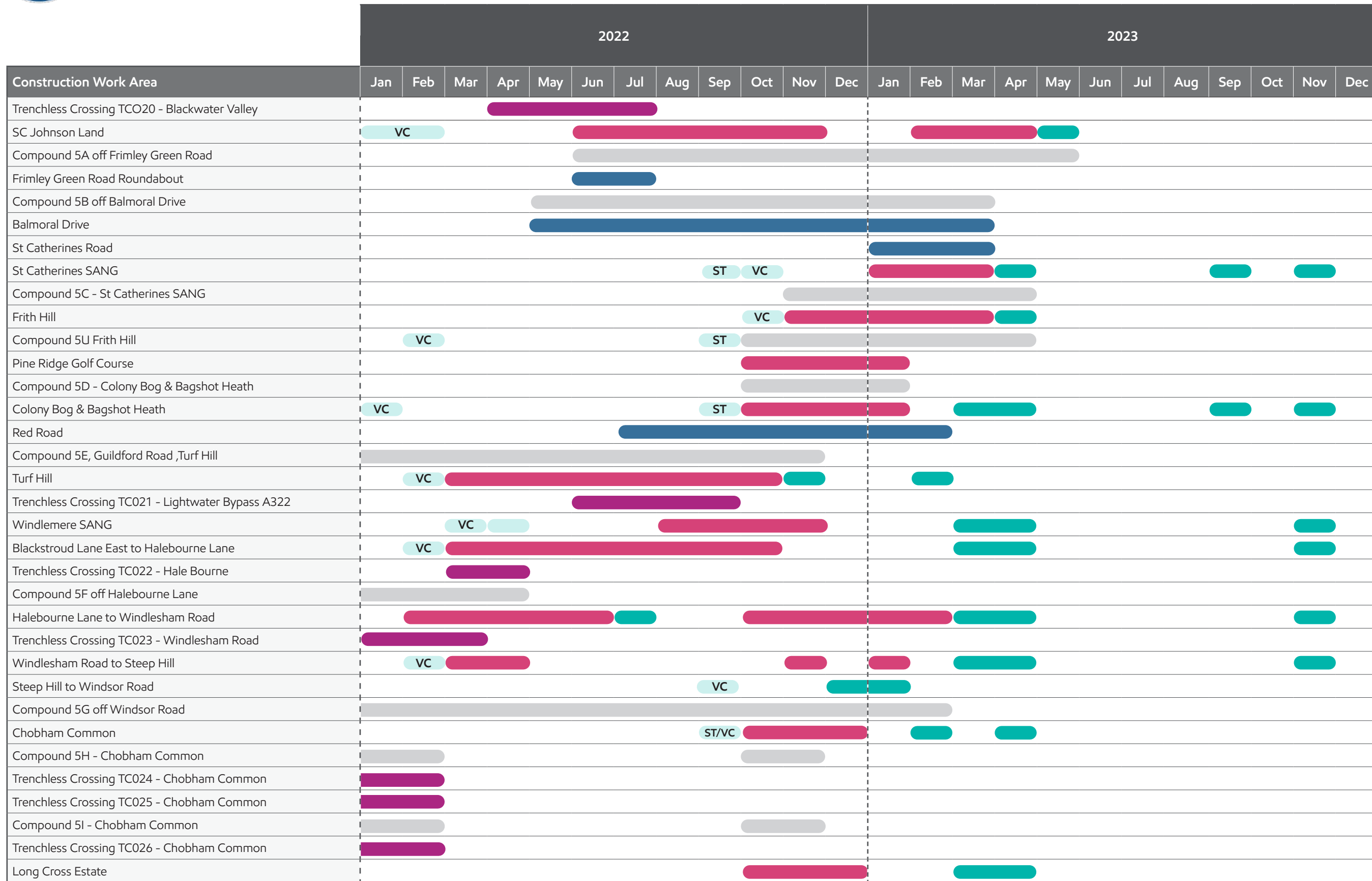
info@slpproject.co.uk



Southampton to London
Pipeline Project



Phasing of works – Surrey Heath



Key

- Advanced works / ecology mitigation
- ST Strimming
- VC Tree and Hedge Clearance
- Trenchless crossing including work area and access
- Open cut works rural / semi rural
- Open cut streetworks
- Compound in use
- Reinstatement
- SE Seeding

We are now releasing a local, area specific timeline for installation. This gives an indication of when we expect to be working in each area. We'll let you know at least two months in advance of any work starting and provide further detail of expected duration. Since we are currently progressing detailed design, the timetable may be subject to some additional change as we finalise our plans and work to reduce overall disruption during construction. Please be assured that if our plans change, we'll keep you informed. Once the pipeline is buried, it will be a quiet neighbour.



If you have any additional questions email us at
info@slpproject.co.uk, visit our website at:
www.slpproject.co.uk/st-catherines-sang/

or scan the
QR code below:



Contact us



info@slpproject.co.uk



07925 068 905

www.slpproject.co.uk

You can also follow us on social media to stay
up-to-date with the project. Follow us at:



@ConstructionSLP



@SLPConstructionProject



Southampton to London
Pipeline Project

For more information please visit
www.slpproject.co.uk