

# Replacing our aviation fuel pipeline: West Heath Road to Queen Elizabeth Park

Installation update  
December 2022



Southampton to London  
Pipeline Project

For more information please visit  
[www.slpproject.co.uk](http://www.slpproject.co.uk)

# Works to replace our aviation fuel pipeline: West Heath Road to Queen Elizabeth Park

## Our installation in this area – summary of works

Section	Update
Trenchless installation under the railway, between Nash Close and West Heath Road – TC015	This crossing is currently being installed and will be completed before the end of this year.
Trenchless installation under Cove Brook – TC016	This work will be undertaken in January 2023 and take approximately three months to complete.
Trenchless installation parallel to the railway line, behind West Heath Road, under Stake Lane, under Prospect Road and beneath the allotments – TC017 and TC018 combined (E-Power)	We are now planning to open cut this section. <b>Please read this leaflet for more information.</b>
Installation in Queen Elizabeth Park (QEP)	<ul style="list-style-type: none"> <li>We are currently completing installation under the Fairy Tree and nearby mature beech tree using a mini auger drill.</li> <li>We have concluded the main open cut section within the park and once the auger drills are completed, we will tie them into the completed sections.</li> <li>Installation and the tie-ins to the open cut sections are due to be completed in January 2023.</li> <li>We are now due to complete TC018 using open cut installation. <b>Please read this leaflet for more information.</b></li> <li>Please see our Borough installation update for more information or visit <a href="http://www.slproject.co.uk">www.slproject.co.uk</a></li> </ul>
Trenchless installation under the A325, from Queen Elizabeth Park to Farnborough Hill School – TC019	This crossing was completed in the summer.

## Installation update for TC017 and TC018 section

The route section for Trenchless Crossing 017/018 runs parallel to the railway line, behind West Heath Road, under Stake Lane, Prospect Road and beneath the allotments.

This summer, when undertaking the E-Power drill, the drill had a technical failure.

The E-Power drill is pushed through the ground to allow the drill head to operate. The pressure needed to push the drill increased significantly above the expected levels, reaching the limit of design of the machine.

We can no longer undertake this trenchless crossing as a combined drill, because the only trenchless method available that complies with the Network Rail standards, is micro tunnelling.

Due to the nature of micro tunnelling, this method wouldn't be practicable to extend over 500m to complete installation as one section and cannot be undertaken in shorter sections within the space of the Order Limits.

### We will now be using open cut installation to install both sections.

- Section One – Cove Brook East to Stake Lane (previously TC017).
- Section Two – Stake Lane to Queen Elizabeth Park (previously TC018).

Within Queen Elizabeth Park we will be keeping Cabrol Road car park closed until installation between the park and Prospect Road is complete. Compound 4AD off West Heath Road will remain in operation to service works.

These plans are subject to further approvals from Rushmoor Borough Council and others. This includes amendments to the Queen Elizabeth Park Site Specific Plan.

We will be in contact with all landowners and local residents directly impacted by this change in installation method.

# Section one - East of Cove Brook to Stake Lane (previously TC017)



- This section runs from the east of Cove Brook, along the railway line to Stake Lane.
- The section is approximately 300m long in total.
- Compound 4AD off West Heath Road will be used to support these works.
- We are looking at narrow working installation techniques to see if we can avoid undertaking works within private gardens. If we need to work within private gardens, we will discuss this with the affected landowners in early 2023.

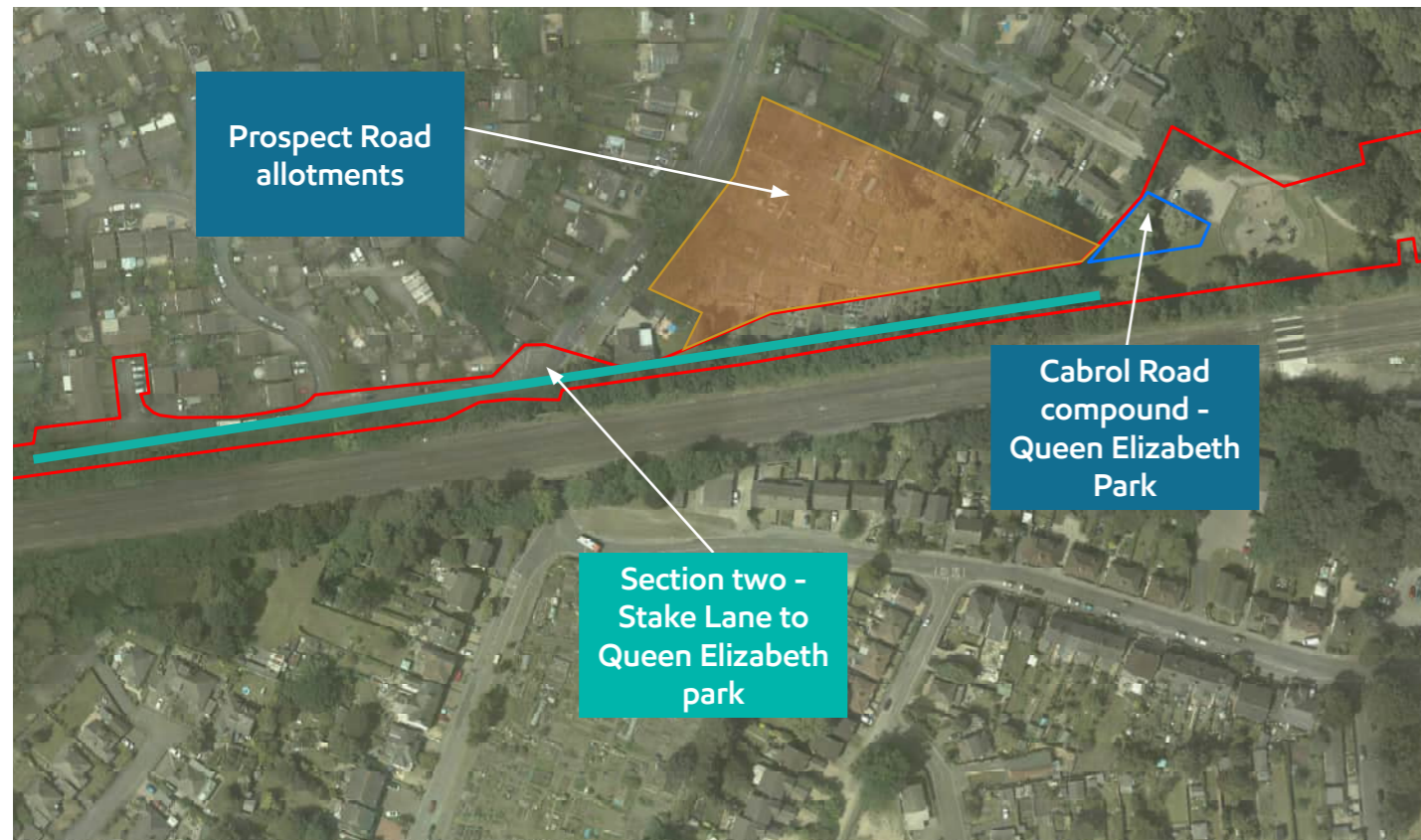
This section will now be undertaken as an open cut installation rather than an alternative trenchless technique which would require both entry and exit shafts.

Before installation, we will:

- Make contact with all residents and landowners who are directly impacted by the works to take detailed records of condition.
- Acquire Network Rail and other utility owners permissions before starting works.
- Undertake environmental mitigation. This will include recording habitats suitable for protected species such as reptiles and badgers.
- If required, we may remove all resident fences, boundary furniture and garden features as required within the Order Limits.
- Securely fence the site with temporary fencing and install noise mitigation measures such as acoustic blankets to reduce noise and disruption.
- Undertake some vegetation and tree removal.
  - We do not plan on removing trees within residential gardens.
  - We aim to use narrow working techniques to reduce the amount of tree and vegetation removal.
  - We will continue to maintain our environmental commitments; including one for one tree replanting with native species and provide a five-year aftercare period for all vegetation.
  - We will fully reinstate the working area and residential gardens once installation is complete.

Open cut installation is likely to start from April 2023. Work is estimated to take around four months to complete.

## Section two - Stake Lane to Queen Elizabeth Park (previously TC018)



- This section runs from Stake Lane, across Prospect Road, along the southern boundary of the allotments and into Queen Elizabeth Park. We will be completing this section of installation in two phases: 1) Stake Lane to Prospect Road and 2) Queen Elizabeth Park to Prospect Road. Together the sections are approximately 440m long.
- Open cut installation in this section will require Network Rail and third party approvals.
- Open cut installation will also require a road closure on Prospect Road. For this we will need to seek a permit through the Highways Permitting Scheme.
- There are a number of challenges in this section including a significant number of buried utilities which we need to work close to.

**In early 2023** we will be undertaking further trial holes in Prospect Road to determine the location of utilities. More specifically to determine the location of two high voltage electrical cables belonging to Scottish and Southern Energy (SSE).

We will be in contact with all landowners and local residents impacted by this change in installation method.

### Stake Lane to Prospect Road – Open cut street works

The section between Stake Lane and Prospect Road is approximately 200 metres. We will work in shorter sections to reduce the impact to residential properties and ensure access is retained to Brewers Close. This is known as a rolling works front.

In early 2023 we will confirm the configuration of the works in this area.

- Stake Lane will remain open with traffic lights for the duration of the works, we will be installing in only one carriageway at any time.
- Driveway access directly in front of our fenced working area will be suspended.
- We will create alternative parking within our Order Limits for residents with restricted driveway access.
- Residents on Brewers Close will retain access.
- Parking will be suspended at the turning area at the end of Stake Lane.
- Stake Lane garages will need to be removed during installation as they will be within the working area. We will contact landowners directly to discuss their arrangements under their existing land agreements.

### Queen Elizabeth Park to Prospect Road – Open cut installation

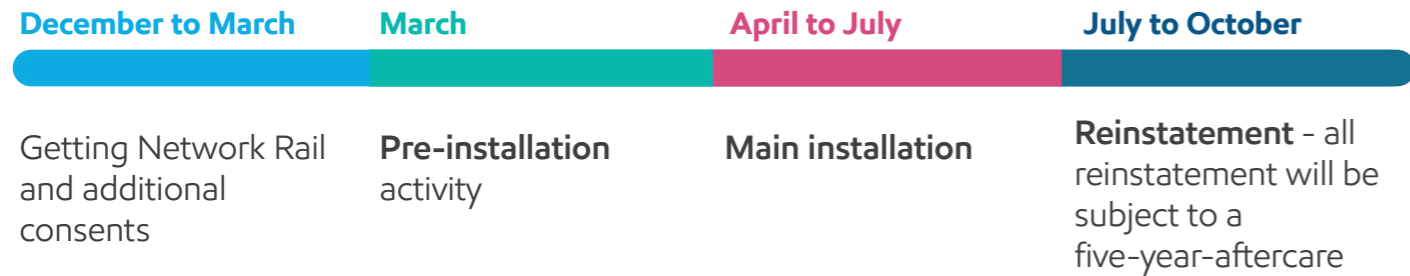
We will be undertaking open cut installation from the park to Prospect Road moving east to west.

- No further vegetation removal is required in the park.
- The construction compound off Cabrol Road (Compound 4AE) will support these works.
- We will open cut through the allotments, working closely with the Prospect Road Allotments association and its tenants. We will fully reinstate the allotments following completion of the works.
- Once installation reaches Prospect Road, we will demobilise from Compound 4AE and reinstate the park's play area and car park.

For this work there will be a full road closure of Prospect Road. All diversions will be clearly signposted.

# When works will take place

## East of Cove Brook to Stake Lane (previously TC017)



## Stake Lane to Queen Elizabeth Park (previously TC018)



\*Subject to Highways Permits

## Open cut installation

Both sections will now be completed using an open cut installation method. This section will provide an overview of how we install the pipeline using an open cut method.

We have undertaken an extensive assessment into the installation options following the technical failure of TC017/018 (E-Power). We are aware that open cut installation will cause disruption to residents but this is the most feasible option.

Using an open cut trench is the most common technique for installation of the pipeline.

To install we will:

- Establish the working area, this may include ground protection mats and top soil stripping of the trench.
- Weld the pipes together in sections called 'strings', ready to install. This will all take place within the established working area. All pipes and welds are checked before they're put in the ground.
- Excavate the trench to the required depth with the soil stored opposite the working area or at an appropriate location.
- When the trench is ready the pipe strings are lifted into the trench. This can be done in sections.
- Connect and weld each pipe string together once in place in the trench. Once safely installed soil is put back in the trench and compacted. Construction equipment is taken away and the area reinstated.
- When working in the road these activities are undertaken in a different order as the trench is opened first to visually inspect the location of existing pipes and cables (other utilities).

To find out more about installation techniques, please visit our website:

[www.slpproject.co.uk/installation/](http://www.slpproject.co.uk/installation/)

# Construction charter



## Plenty of notice

We'll let you know at least two months in advance of any work starting and if our plans change, we'll let you know.



## Here to help

Our local team will be available by phone or email to answer any questions you have.

## Information directly to you



Our local area e-newsletter and alerts will let you know what's happening. Where we are working in streets or roads, we'll operate a dedicated text service to inform interested residents.

## In your area



We'll make sure information about installation in your area is easy to find on our website, in a way that is easy for you to identify what's important to you. In some public parks, we'll hold pop up events to meet with those using the facilities and give out information about our installation plans.



## Talking to landowners

All landowners affected by the installation will have a dedicated member of our lands team to contact to discuss our work.



## Open and honest

We'll be clear about our works and any disruption that may take place.

## Safe and secure



We'll keep our team safe, and we'll keep you safe. Our commitment to health and safety is at the heart of our business and we'll make sure your safety is not impacted by our work.

## Well managed sites



Our sites will use fencing suitable to the location and we'll use things like wheel washing on our vehicles to keep the surrounding roads clean.

# Keeping up to date on installation plans

Cove Brook to Queen Elizabeth Park is a challenging area. We expect that our plans will develop as we work to install the replacement pipeline in this area of Farnborough.

We have a dedicated text service along with a monthly e-newsletter set up to keep you informed, we encourage you to stay up to date on our works in your area:

To register for our weekly text service, please text **WHRQEP** to **60777**

To sign up to our e-newsletter, please visit [www.slpproject.co.uk/signup](http://www.slpproject.co.uk/signup)

**If you have questions please contact our local team on:**

## Contact us



[info@slpproject.co.uk](mailto:info@slpproject.co.uk)



07925 068 905

[www.slpproject.co.uk](http://www.slpproject.co.uk)

## If you are a landowner:

Please call our dedicated land team on

Tel: 08454 370 383

Email: [slpproject@fishergerman.co.uk](mailto:slpproject@fishergerman.co.uk)

You can follow us on social media to stay up-to-date with the project.

Follow us on:



@ConstructionSLP



@SLPConstructionProject





Southampton to London  
Pipeline Project

For more information please visit  
[www.slpproject.co.uk](http://www.slpproject.co.uk)