

Runnymede Borough Construction Update

March 2022



Southampton to London
Pipeline Project

For more information please visit
www.slpproject.co.uk

Construction overview

In Runnymede Borough the replacement pipeline route travels through private land, public areas and along roads.

No one likes the noise and inconvenience caused by construction activities, so we'd like to thank you in advance for your patience when it comes to any disruption that we may cause. It is important to us that you know when we will be working in your area and how you can contact us if you have any questions.

This leaflet contains our month-by-month expected timetable for works and a map of where the replacement pipeline will be installed. If we are working in your road we will send you information before works start. We also have a dedicated webpage for Chertsey Meads.

Our community charter sets out our commitments to you during construction. We will do our best to keep you informed and reduced disruption. The most up-to-date information will always be on our website at www.slpproject.co.uk

The exact timing of works may change a little so it's worth looking at our website if you'd like to check what's happening in your area.

You can also sign up to our e-newsletter to receive the latest updates to our plans in Runnymede.

Receive construction updates

Get regular updates and sign up to our newsletter

slpproject.co.uk/signup

 @ConstructionSLP  @SLPConstructionProject

Contact us

Our project team is here to help, if you have a question at any time please contact us:

 info@slpproject.co.uk  07925 068 905

Keeping 100 road tankers off the road every day



Based on Esso's 2015 data for its existing pipeline



Runnymede Borough Council

All roads will remain open with traffic management or diversions in operation.

Vegetation will be replanted once construction is complete.

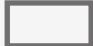
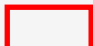
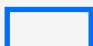

Parks will remain open during installation.

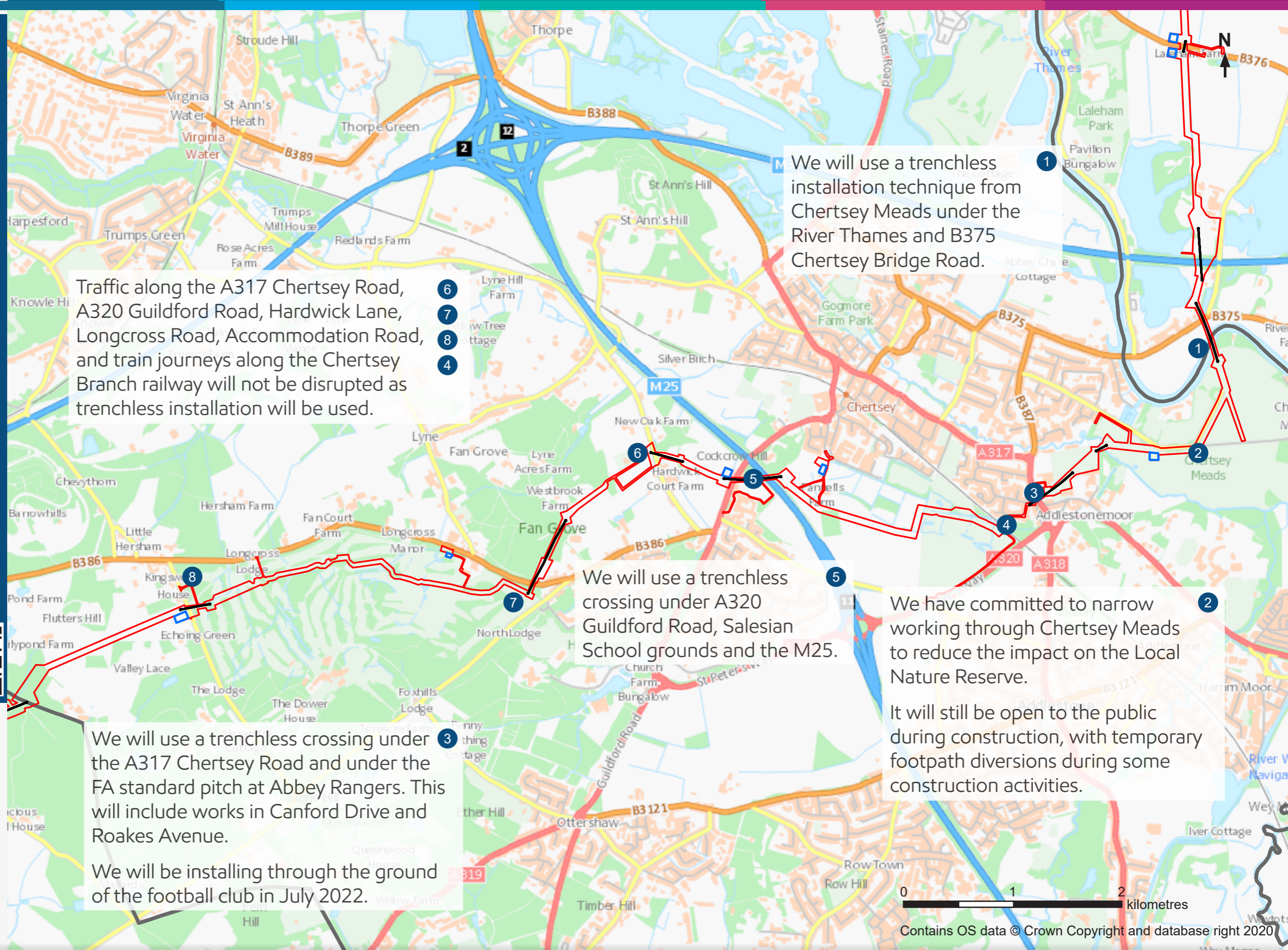
Public Rights of Way, such as footpaths, will remain open with diversions.

Scan the QR code to visit our interactive map for all information about our installation work.



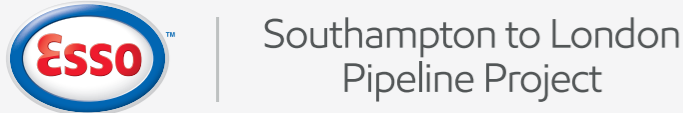
Legend

-  District boundary
-  Maximum limit of the working area, also known as Order Limits
-  Temporary construction compounds
-  Trenchless crossings



This project is replacing approximately 90km of our underground aviation fuel pipeline from Boorley Green, Hampshire to our West London Terminal storage facility in Hounslow. Pipelines are a safe, secure and low-impact way of transporting fuel. The pipeline will keep 100 road tankers off the road every day.*
**based on Esso's 2015 data for its existing pipeline*

For regular updates, sign up to our newsletter at www.slpproject.co.uk



Chertsey Meads SANG

Notices informing users of the Chertsey Meads SANG about the works will be in place prior to works starting.

Reinstatement will take place directly after the main installation works in September 2022.

Once installed, the pipeline will be a quiet neighbour and will go unnoticed by most people.

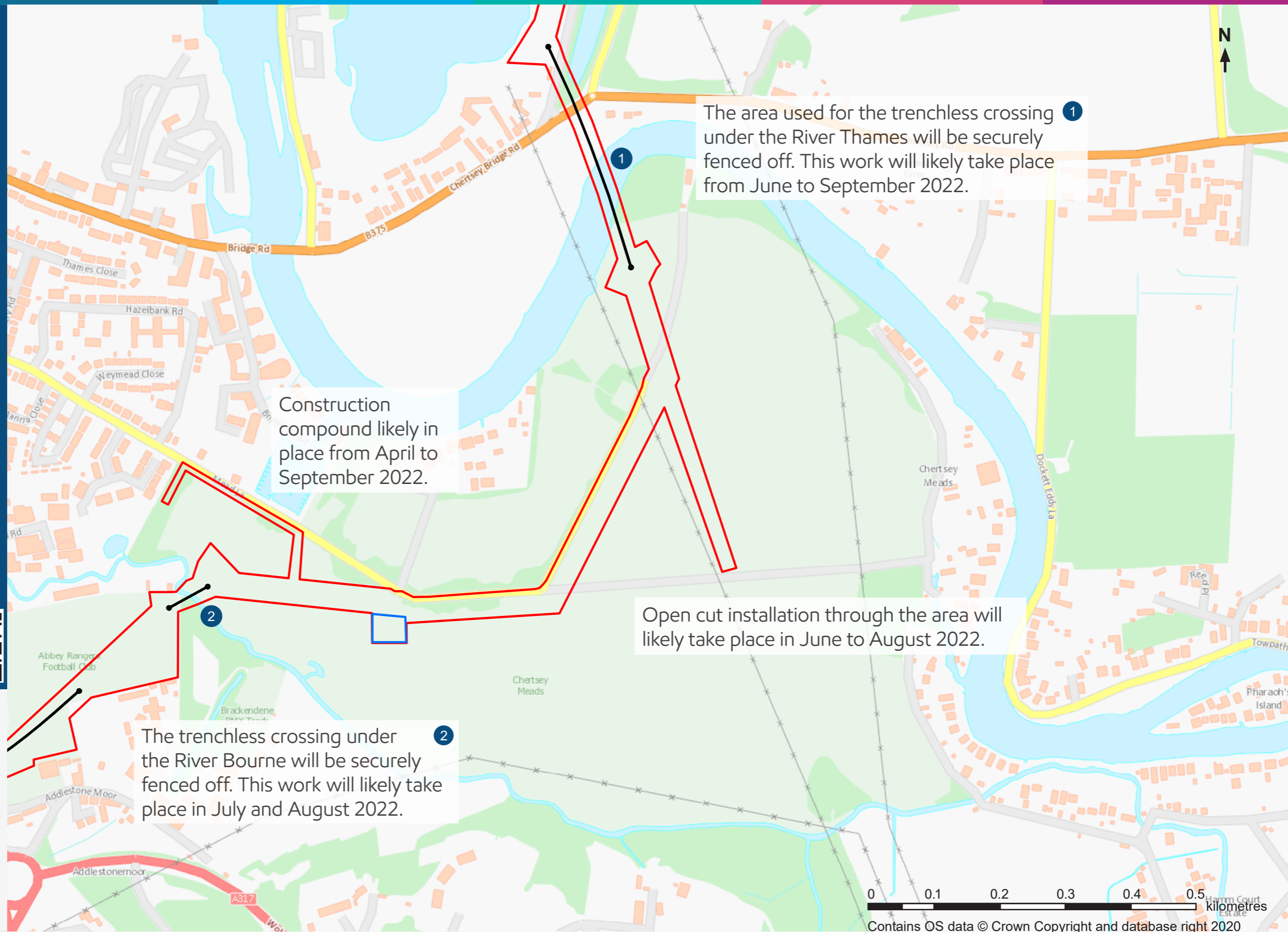
Prior to installation, we will work with the Chertsey Agricultural Show to limit impacts to the Show and along Mead Lane.

Scan the QR code to visit our interactive map for all information about our installation work.



Legend

- District boundary
- Maximum limit of the working area, also known as Order Limits
- Temporary construction compounds
- Trenchless crossings



0 0.1 0.2 0.3 0.4 0.5 kilometres
Contains OS data © Crown Copyright and database right 2020



This project is replacing approximately 90km of our underground aviation fuel pipeline from Boorley Green, Hampshire to our West London Terminal storage facility in Hounslow. Pipelines are a safe, secure and low-impact way of transporting fuel. The pipeline will keep 100 road tankers off the road every day.*
**based on Esso's 2015 data for its existing pipeline*

For regular updates, sign up to our newsletter at www.slpproject.co.uk

Streetworks in Runnymede

In Runnymede Borough we will be working within two roads. If your road is impacted, we will contact you before installation to provide specific details of the work.

All streetworks will be undertaken in line with the County Highways permitting scheme.

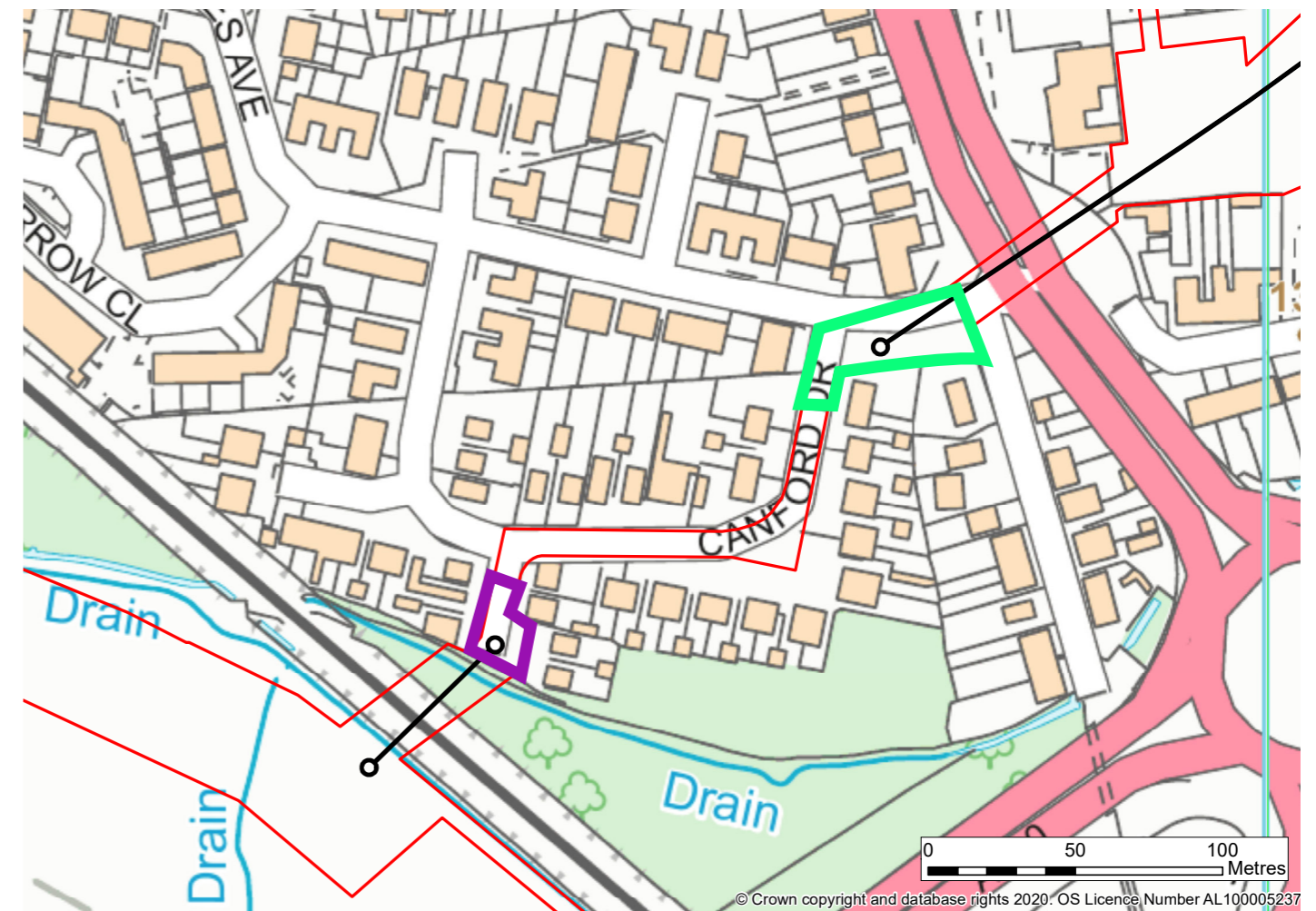
Before works start we will offer residents living next to the streetworks installation areas an opportunity to sign up to a dedicated text service for updates on progress and works taking place by their homes.

Summary of works

The green area on the map below shows the approximate working area for the trenchless installation under the A317 Chertsey Road and the FA quality football pitch at Abbey Rangers. This work will start from May 2022. Residents affected by these works will receive information in April 2022.

The purple area on the map below also shows the approximate working area for the trenchless installation under the Chertsey Branch railway. This work will start from October 2022. Residents affected by these works will receive information in August 2022.

We will be installing the replacement pipeline along Canford Drive from November 2022. Residents affected by these works will receive further information in September 2022.



Phasing of works - Runnymede

| Construction Work Area | 2021 | | | | | 2022 | | | | | | | | | | | | 2023 | | | | | | | | | | |
|--|------|-----|-----|-----|-----|------|-----|-----|-----|-----|-----|-----|-----|-----|-----|-----|-----|------|-----|-----|-----|-----|-----|-----|-----|-----|-----|--|
| | Aug | Sep | Oct | Nov | Dec | Jan | Feb | Mar | Apr | May | Jun | Jul | Aug | Sep | Oct | Nov | Dec | Jan | Feb | Mar | Apr | May | Jun | Jul | Aug | Sep | Oct | |
| Chobham Common to Accommodation Road | | | | | | | | | | | | | | | VC | | | | PL | | SE | | | | | | | |
| Compound 5J off Accommodation Road | | | | | | | | | | | | | | | | | | | | | | | | | | | | |
| Trenchless Crossing TC027 - Accommodation Road | | | | | | | | | | | | | | | | | | | | | | | | | | | | |
| Foxhills Golf Course | | | | | | | | | | | | | | | | | | | | | | | | | | | | |
| Compound 5K - Foxhills Golf Course | | | | | | | | | | | | | | | | | | | | | | | | | | | | |
| Trenchless Crossing TC028 - Longcross Road | | | | | | | | | | | | | | | | | | | | | | | | | | | | |
| Longcross Road to Hardwick Lane | | | | | | | | | | | | | | | | | | | | | | | | | | | | |
| Trenchless Crossing TC029 - Hardwick Lane | | | | | | | | | | | | | | | | | | | | | | | | | | | | |
| Hardwick Lane to Guildford Road A320 | | | | | | | | | | | | | | | | | | | | | | | | | | | | |
| Compound 5L off Guildford Road A320 | | | | | | | | | | | | | | | | | | | | | | | | | | | | |
| Trenchless Crossing TC030 - A320 and M25 | | | | | | | | | | | | | | | | | | | | | | | | | | | | |
| Addlestone Moor and Abbey Moor Golf Course | | | | | | | | | | | | | | | | | | | | | | | | | | | | |
| Compound 5M - Addlestone Moor | | | | | | | | | | | | | | | | | | | | | | | | | | | | |
| Trenchless Crossing TC031 - Railway Line | | | | | | | | | | | | | | | | | | | | | | | | | | | | |
| Canford Drive | | | | | | | | | | | | | | | | | | | | | | | | | | | | |
| Trenchless Crossing TC032 Chertsey Road A317 | | | | | | | | | | | | | | | | | | | | | | | | | | | | |
| Abbey Rangers Football Club | | | | | | | | | | | | | | | | | | | | | | | | | | | | |
| Trenchless Crossing TC033 - River Bourne | | | | | | | | | | | | | | | | | | | | | | | | | | | | |
| Chertsey Meads | | | | | | | | | | | | | | | | | | | | | | | | | | | | |
| Compound 5N - Chertsey Meads | | | | | | | | | | | | | | | | | | | | | | | | | | | | |
| Trenchless Crossing TC034 - River Thames | | | | | | | | | | | | | | | | | | | | | | | | | | | | |

Key

- Advanced works / ecology mitigation
- ST Strimming
- VC Tree and Hedge Clearance
- Trenchless crossing including work area and access
- Open cut works rural / semi rural
- Open cut streetworks
- Compound in use
- Reinstatement
- SE Seeding
- PL Planting

i

We are now releasing a local, area specific timeline for installation. This gives an indication of when we expect to be working in each area. We'll let you know at least two months in advance of any work starting and provide further detail of expected duration. Since we are currently progressing detailed design, the timetable may be subject to some additional change as we finalise our plans and work to reduce overall disruption during construction. Please be assured that if our plans change, we'll keep you informed. Once the pipeline is buried, it will be a quiet neighbour.

Community charter



Plenty of notice

We'll let you know at least two months in advance of any work starting and if our plans change, we'll let you know.



Here to help

Our local team will be available by phone or email to answer any questions you have.



Information directly to you

Our local area e-newsletter and alerts will let you know what's happening. Where we are working in streets or roads, we'll operate a dedicated text service to inform interested residents.



In your area

We'll make sure information about installation in your area is easy to find on our website, in a way that is easy for you to identify what's important to you. In some public parks, we'll hold pop up events to meet with those using the facilities and give out information about our installation plans.



Talking to landowners

All landowners affected by the installation will have a dedicated member of our lands team to contact to discuss our work.



Open and honest

We'll be clear about our works and any disruption that may take place.



Safe and secure

We'll keep our team safe, and we'll keep you safe. Our commitment to health and safety is at the heart of our business and we'll make sure your safety is not impacted by our work.



Well managed sites

Our sites will use fencing suitable to the location and we'll use things like wheel washing on our vehicles to keep the surrounding roads clean.

