

Hart District Construction update

October 2021



Southampton to London
Pipeline Project

For more information please visit
www.slpproject.co.uk

Construction overview

In the Hart District, the replacement pipeline route travels through private land, public areas and along roads.

No one likes the noise and inconvenience caused by construction activities, so we'd like to thank you in advance for your patience when it comes to any disruption that we may cause. It is important to us that you know when we will be working in your area and how you can contact us if you have any questions.

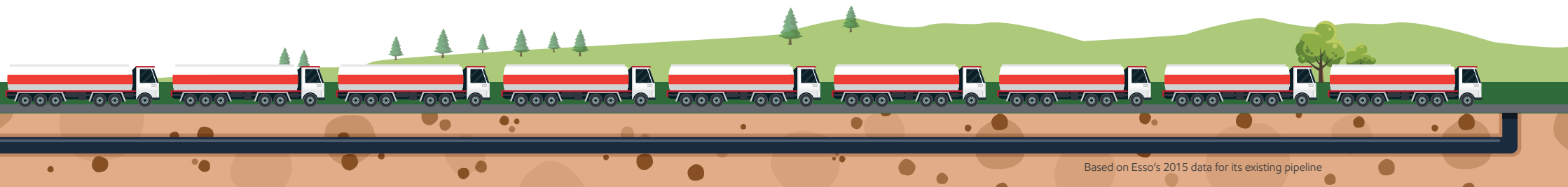
This leaflet contains our month-by-month expected timetable for works and a map of where the replacement pipeline will be installed. If we are working in your road we will send you information before works start. We also have dedicated webpages for public parks and open spaces in the borough.

Our community charter sets out our commitments to you during construction. We will do our best to keep you informed and reduced disruption. The most up-to-date information will always be on our website at www.slpproject.co.uk

The exact timing of works may change a little so it's worth looking at our website if you'd like to check what's happening in your area.

You can also sign up to our e-newsletter to receive the latest updates to our plans in the Hart District.

Keeping 100 road tankers off the road every day



Based on Esso's 2015 data for its existing pipeline



Southampton to London
Pipeline Project

Esso Petroleum Company, Limited Registered in England No. 26538
Registered Office: Ermyn House, Ermyn Way, Leatherhead, Surrey, KT22 8UX

For more information please visit
www.slpproject.co.uk



Key installation dates in Hart*

- **Since September 2021** - We have been setting up our logistics hub in Hartland Park.
- **From November 2021** - Installation starts on private land next to Beacon Hill Road - following a request to align schedules with the current development works. Installation of a compound (4AA) off Old Ively Road will start.
- **From December 2021** - Installation starts for the trenchless installation section in Bourley and Long Valley to avoid wetland areas in this Site of Special Scientific Interest (TC011/12).
- **From January 2022** - Installation of a compound (4Y) off Naishes Lane will start. This is located within the open area of the grass, next to the Army Cadets Hall.
- **From January 2022** - Installation starts for the trenchless crossing under the Fleet Road A323 & Basingstoke Canal (TC013).
- **From March 2022** - Installation works in Naishes Lane will start.
- **From June 2022** - Installation works across the borough will begin in multiple locations. Please refer to the phasing plan included in this brochure for further details.

*Please note, these dates do not include pre-installation works e.g. vegetation clearance.

During the installation of our replacement aviation fuel pipeline through Hart District, we will be providing regular updates on current and upcoming works. These updates will be made on our website, our social media accounts and via an e-newsletter.

For the latest information about installation, visit our website or scan the QR code opposite:



Receive construction updates

Get regular updates and sign up to our newsletter

slpproject.co.uk/signup

 @ConstructionSLP  @SLPConstructionProject

Contact us

Our project team is here to help, if you have a question at any time please contact us:

 info@slpproject.co.uk  07925 068 905



Southampton to London
Pipeline Project

ESSO Petroleum Company, Limited Registered in England No. 26538
Registered Office: Ermyn House, Ermyn Way, Leatherhead, Surrey, KT22 8UX

For more information please visit
www.slpproject.co.uk





| Construction Work Area | 2021 | | | | | 2022 | | | | | | | | | | | | 2023 | | | | | | | | | | |
|---|------|-----|-----|-----|-----|------|-----|-----|-----|-----|-----|-----|-----|-----|-----|-----|-----|------|-----|-----|-----|-----|-----|-----|-----|-----|-----|--|
| | Aug | Sep | Oct | Nov | Dec | Jan | Feb | Mar | Apr | May | Jun | Jul | Aug | Sep | Oct | Nov | Dec | Jan | Feb | Mar | Apr | May | Jun | Jul | Aug | Sep | Oct | |
| Dippenhall Road to Dippenhall Street | | | | | VC | | | | | | | | | | | | | | | | | | | | | | | |
| Compound 4U off Dippenhall Street | | | | | | | | | | | | | | | | | | | | | | | | | | | | |
| Dippenhall Street to Heath Lane | | | | | | | VC | | | | | | | | | | | | | | | | | | | | | |
| Heath lane to Redlands Lane | | | | | VC | | | | | | | | | | | | | | | | | | | | | | | |
| Redlands Lane to Ewshot Hill A287 | | | | | VC | | | | | | | | | | | | | | | | | | | | | | | |
| Compound 4V off Ewshot Hill A287 | | | | | | | | | | | | | | | | | | | | | | | | | | | | |
| Trenchless Crossing TC010 - Ewshot Hill A287 | | | | | | | | | | | | | | | | | | | | | | | | | | | | |
| Ewshot Hill A287 to Naishes Lane | | | | | | VC | | | | | | | | | | | | | | | | | | | | | | |
| Compound 4X off Ewshot Lane | | | | | | | | | | | | | | | | | | | | | | | | | | | | |
| Naishes Lane | | | | | | | | | | | | | | | | | | | | | | | | | | | | |
| Compound 4Y off Naishes Lane | | | | | | | | | | | | | | | | | | | | | | | | | | | | |
| Wakefords Copse | | | | | | VC | | | | | | | | | | | | | | | | | | | | | | |
| Beacon Hill Road | | | | | | VC | | | | | | | | | | | | | | | | | | | | | | |
| Peter Driver Sports Ground | | | | | VC | VC | | | | | | | | | | | | | | | | | | | | | | |
| Compound 4Z off Bourley Road | | | | | | | | | | | | | | | | | | | | | | | | | | | | |
| Tweseldown to Fleet Road A323 | | | | | | | | | | | | | | | | | | | | | | | | | | | | |
| Trenchless Crossing TC011/12 Bourley and Long Valley | | | | | | VC | | | | | | | | | | | | | | | | | | | | | | |
| Trenchless Crossing TC013 - Fleet Road A323 & Basingstoke Canal | | | | | | VC | | | | | | | | | | | | | | | | | | | | | | |
| Hartland Park Logistics Hub | | | | | | | | | | | | | | | | | | | | | | | | | | | | |
| Compound 4AA off Old Ively Road | | | | | | | | | | | | | | | | | | | | | | | | | | | | |

Key

- Advanced works / ecology mitigation
- ST** Strimming
- VC** Tree and Hedge Clearance
- Trenchless crossing including work area and access
- Open cut works rural / semi rural
- Open cut streetworks
- Compound in use
- Reinstatement
- SE** Seeding
- PL** Planting

i

We are now releasing a local, area specific timeline for installation. This gives an indication of when we expect to be working in each area. We'll let you know at least two months in advance of any work starting and provide further detail of expected duration. Since we are currently progressing detailed design, the timetable may be subject to some additional change as we finalise our plans and work to reduce overall disruption during construction. Please be assured that if our plans change, we'll keep you informed. Once the pipeline is buried, it will be a quiet neighbour.

Hart District Council

Once installed, the pipeline will be a quiet neighbour and will go unnoticed by most people.

Traffic management will be used during construction.

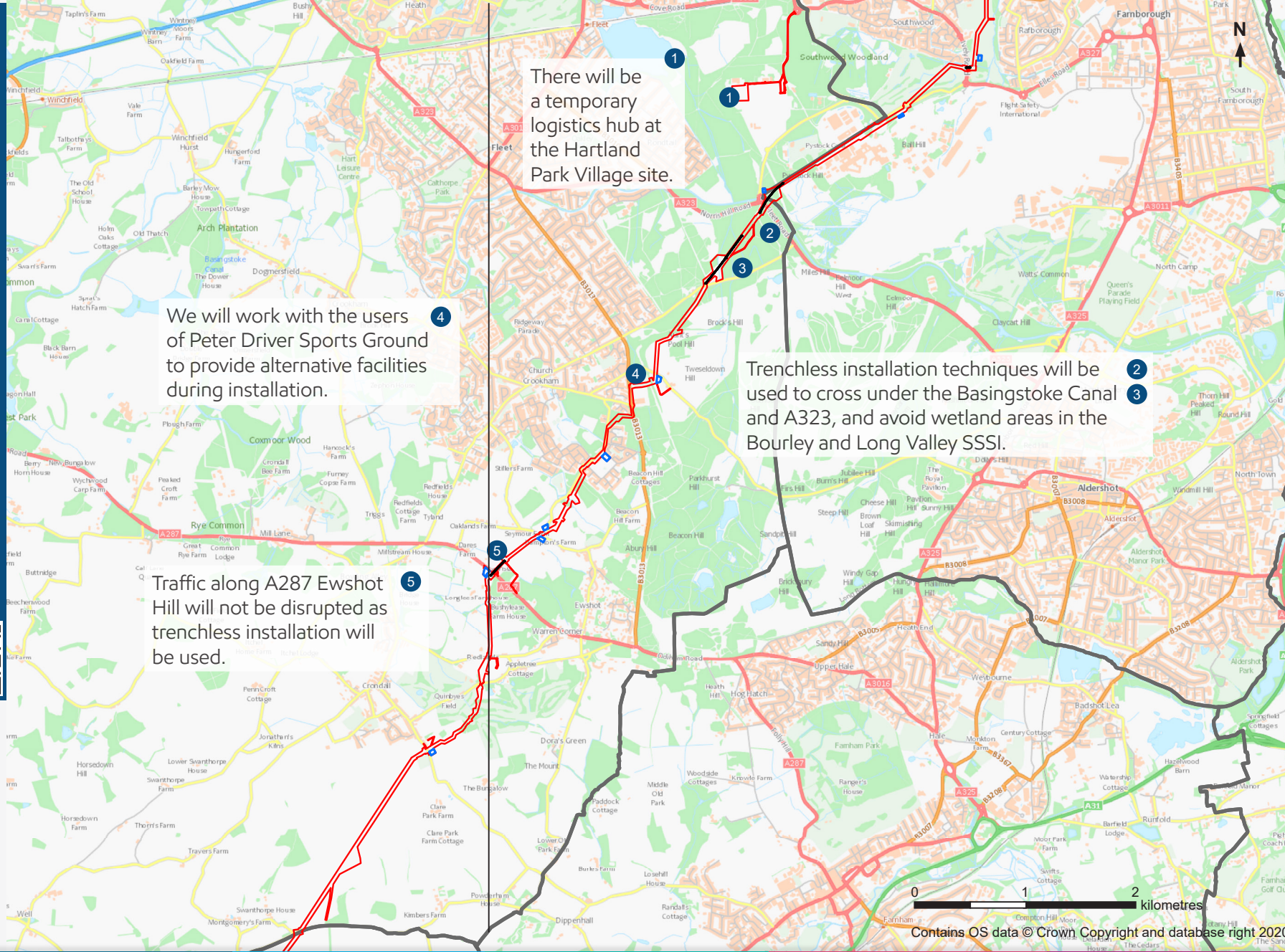
Public Rights of Way, such as footpaths, will remain open with diversions.

Vegetation will be replanted once construction is complete.

Scan the QR code to visit our interactive map for all information about our installation work.



- Legend**
- District boundary
 - Maximum limit of the working area, also known as Order Limits
 - Temporary construction compounds
 - Trenchless crossings



*based on Esso's 2015 data for its existing pipeline

Community Charter



Plenty of notice

We'll let you know at least two months in advance of any work starting and if our plans change, we'll let you know.



Here to help

Our local team will be available by phone or email to answer any questions you have.



Information directly to you

Our local area e-newsletter and alerts will let you know what's happening. Where we are working in streets or roads, we'll operate a dedicated text service to inform interested residents.



In your area

We'll make sure information about installation in your area is easy to find on our website, in a way that is easy for you to identify what's important to you. In some public parks, we'll hold pop up events to meet with those using the facilities and give out information about our installation plans.



Talking to landowners

All landowners affected by the installation will have a dedicated member of our lands team to contact to discuss our work.



Open and honest

We'll be clear about our works and any disruption that may take place.



Safe and secure

We'll keep our team safe, and we'll keep you safe. Our commitment to health and safety is at the heart of our business and we'll make sure your safety is not impacted by our work.



Well managed sites

Our sites will use fencing suitable to the location and we'll use things like wheel-washing on our vehicles to keep the surrounding roads clean.

