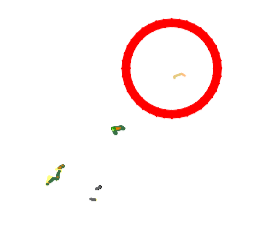
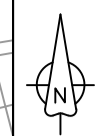
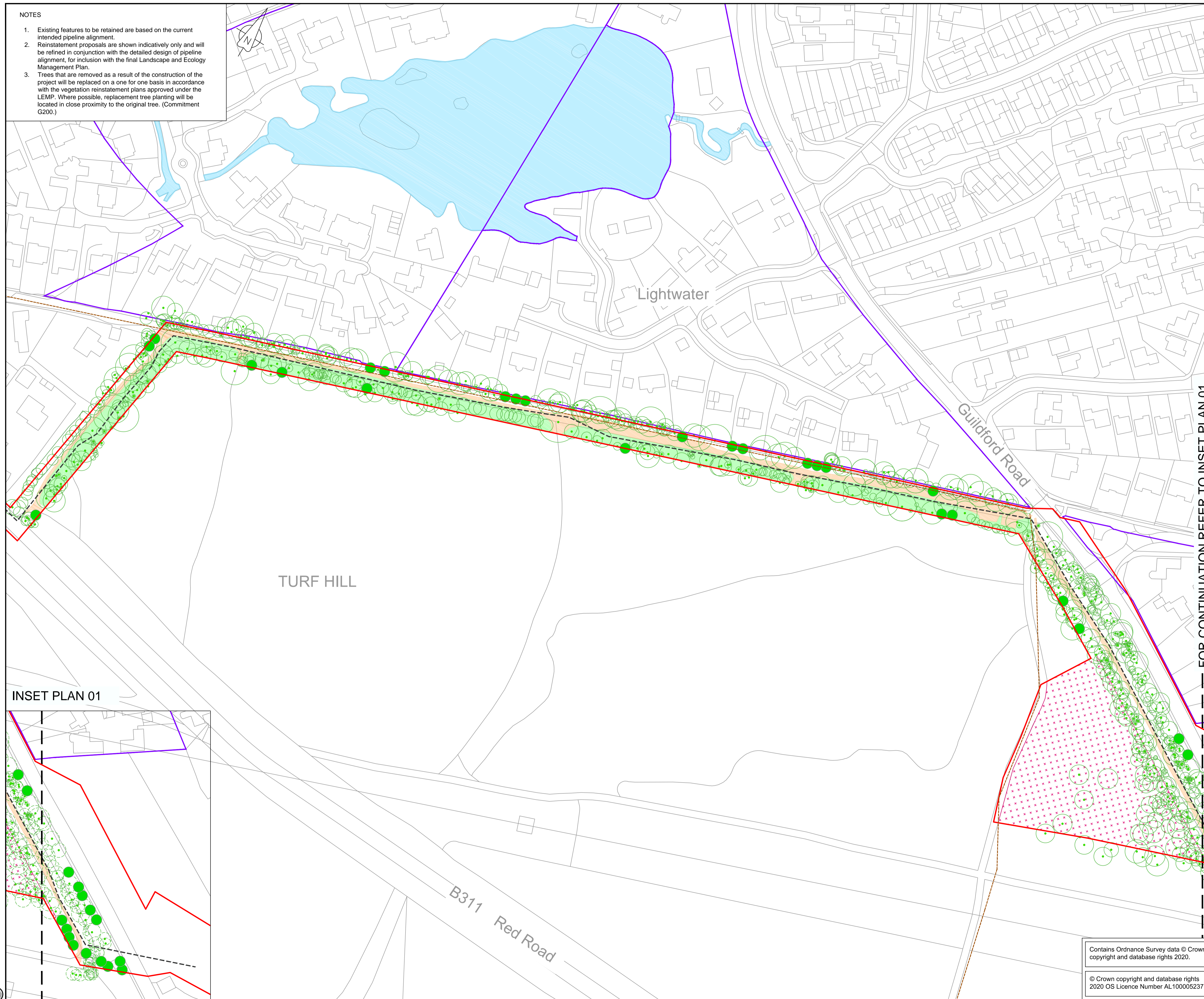


- NOTES**
- Existing features to be retained are based on the current intended pipeline alignment.
 - Reinstatement proposals are shown indicatively only and will be refined in conjunction with the detailed design of pipeline alignment, for inclusion with the final Landscape and Ecology Management Plan.
 - Trees that are removed as a result of the construction of the project will be replaced on a one for one basis in accordance with the vegetation reinstatement plans approved under the LEMP. Where possible, replacement tree planting will be located in close proximity to the original tree. (Commitment G200.)

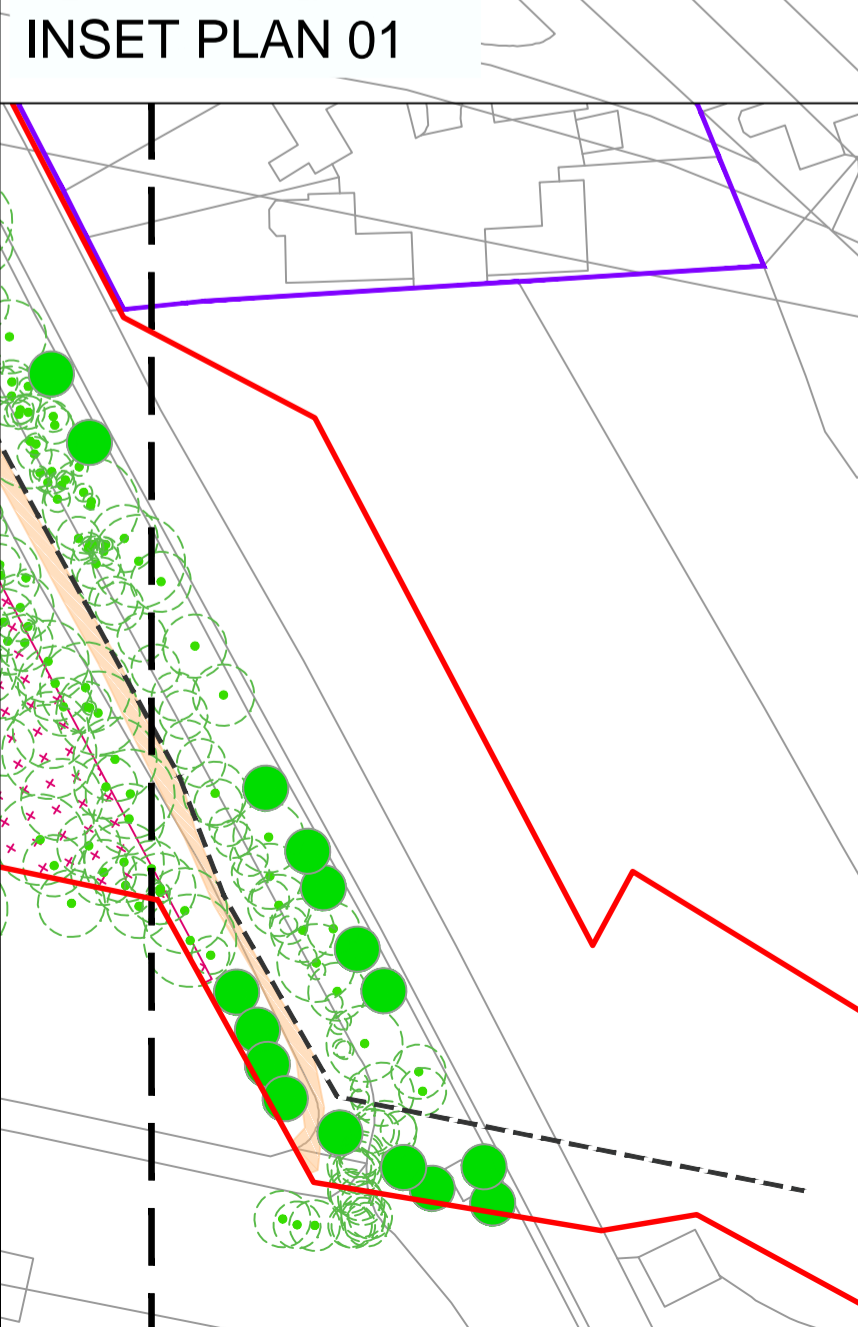
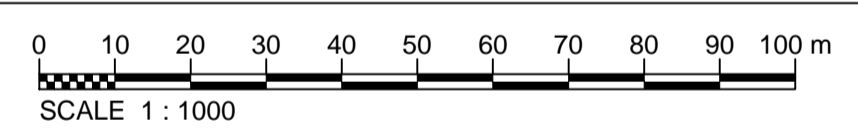


LOCATION PLAN
SCALE 1:500,000

LEGEND

- ORDER LIMITS
- INTENDED PIPELINE CENTRELINE
- PUBLIC RIGHTS OF WAY (PROW)
- TREE PRESERVATION ORDER (TPO)
- EXISTING CONTEXT**
- TREE GROUPS RETAINED
- INDIVIDUAL TREES RETAINED
- EXISTING FEATURES RETAINED**
- TREE GROUPS RETAINED
- INDIVIDUAL TREES RETAINED
- FEATURES TO BE REINSTATED**
- SOFT LANDSCAPE**
- INDIVIDUAL TREE REINSTATEMENT PLANTING
- NATURAL REGENERATION FOR CREATION OF HEATHLAND HABITAT
- UNDERSTOREY REINSTATEMENT PLANTING
- HARD LANDSCAPE**
- FOOTPATH SURFACING REINSTATEMENT

FOR CONTINUATION REFER TO INSET PLAN 01



Rev	Rev. Date	Purpose of revision	Drawn	Checked	Rev'd	Appr'd
P01.2	05/03/20	DEADLINE 6 SUBMISSION				

JACOBS

1180 Eskdale Road, Winnersh, Wokingham, RG41 5TU
Tel: +44(0)118 946 7000 - Fax: +44(0)118 946 7001
www.jacobs.com

Client: Esso Petroleum Company, Limited
Ermyn House,
Ermyn Way,
Leatherhead,
Surrey,
KT22 8UX

Project: Southampton to London Pipeline Project

Drawing title: **8.58 SSP TURF HILL: REINSTATEMENT**

Drawing status: **Fit for Stage Approval**

Scale	1:1000	DO NOT SCALE
Jacobs No.	B2325300	Rev
Client no.		P01.2

Drawing number: **B2325300-JAC-000-ENV-DRG-111157**

Contains Ordnance Survey data © Crown copyright and database rights 2020.

© Crown copyright and database rights 2020 OS Licence Number AL100005237.

© Copyright 2020 Jacobs U.K. Limited. The concepts and information contained in this document are the property of Jacobs. Use or copying of this document in whole or in part without the written permission of Jacobs constitutes an infringement of copyright. Limitation: This drawing has been prepared on behalf of, and for the exclusive use of, the Client, and is subject to, and issued in accordance with, the provisions of the contract between Jacobs and the Client. Jacobs accepts no liability or responsibility whatsoever for, or in respect of, any use of, or reliance upon, this drawing by any third party.

C:\pwworking\jacobs_uk_water\utilities_ssf\jgint_eistubs\dmsf1045\B2325300-JAC-000-ENV-DRG-111157.dwg - 05/03/2020 18:00:49 - A1Frame - Eistubs